

# NSSE

## national survey of student engagement

FRESHMAN

EXPERIENCE

AY 2015-2016

1,168 freshmen were invited to complete the NSSE survey measuring their academic behaviors for AY15-16. 314 (27%) responded.

**63%**  
are female



**72%**  
are taking 5+  
courses



**44%**  
are first generation  
college students



**35%**  
live on campus



**95%**  
began their college  
career at AU



**94%**  
are full-time  
students



**61%**  
plan to graduate with a  
natural science degree



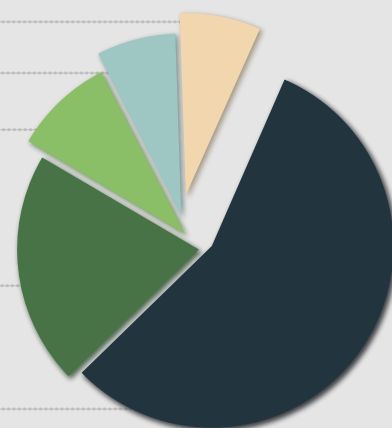
7% Other

7% Multiracial

9% Asian

21% Black or  
African American

56% White



- ▲ Augusta University students' average was **significantly higher** than that of our peers.
- Augusta University students' average was **not significantly different** than that of our peers.
- ▼ Augusta University students' average was **significantly lower** than that of our peers.

### ACADEMIC CHALLENGE

**71%** ▲  
often summarized what  
they learned in class or  
from course materials



▲ **82%**  
often identified  
key information from  
reading assignments

### CAMPUS ENVIRONMENT

**52%** --  
had high quality interactions  
with other students



▲ **45%**  
said the institution emphasizes  
using academic support  
services very much

### EXPERIENCES WITH FACULTY

**44%** --  
discussed their  
academic performance  
with a professor



▲ **69%**  
often got detailed  
feedback on their tests  
and assignments

### LEARNING WITH PEERS

at least **75%** ▲  
often had discussions with diverse others in terms  
of race/ethnicity, economic background, religious  
beliefs, and political views



▲ **59%**  
often asked another student  
to help them understand  
course material



# NSSE

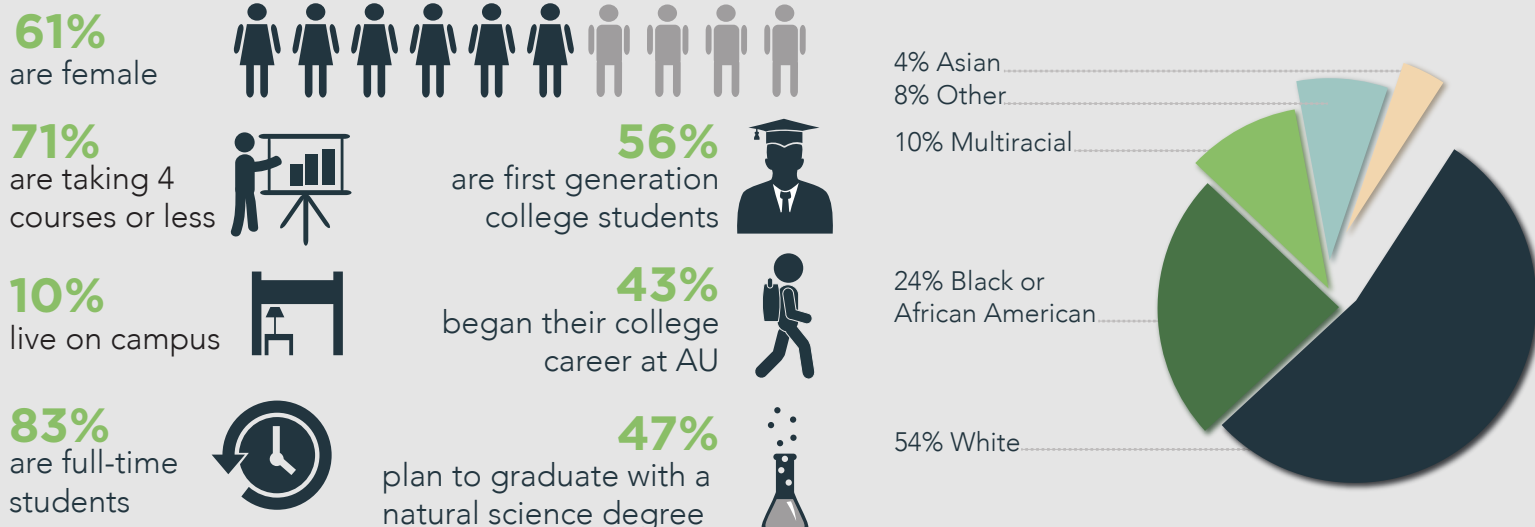
## national survey of student engagement

SENIOR

EXPERIENCE

AY 2015-2016

826 seniors were invited to complete the NSSE survey measuring their academic behaviors for AY15-16.  
215 (26%) responded.



- ▲ Augusta University students' average was **significantly higher** than that of our peers.
- Augusta University students' average was **not significantly different** than that of our peers.
- ▼ Augusta University students' average was **significantly lower** than that of our peers.

### ACADEMIC CHALLENGE

**83%** ▲  
often reviewed  
notes after class

▲ **81%**  
often summarized  
what they learned in class  
or their course materials



### EXPERIENCES WITH FACULTY

**41%** ▲  
discussed their academic  
performance with a professor

▲ **50%**  
often talked about  
career plans with a faculty member



### CAMPUS ENVIRONMENT

**66%** ▲  
had high quality interactions with  
their academic advisors

▲ **85%**  
said the institution  
emphasized providing support  
to help students succeed academically



### LEARNING WITH PEERS

at least **76%** ▲  
often had discussions with diverse others in terms  
of race/ethnicity, economic background, religious  
beliefs, and political views

-- **59%**  
often explained course material  
to one or more students

