

Ultrasound Teaching Reference



Matthew Lyon, MD
Walter (Ted) Khun, MD
Eric Zevallos, MD
Ali Ennis, MSMI



AUGUSTA UNIVERSITY
MEDICAL COLLEGE
OF GEORGIA



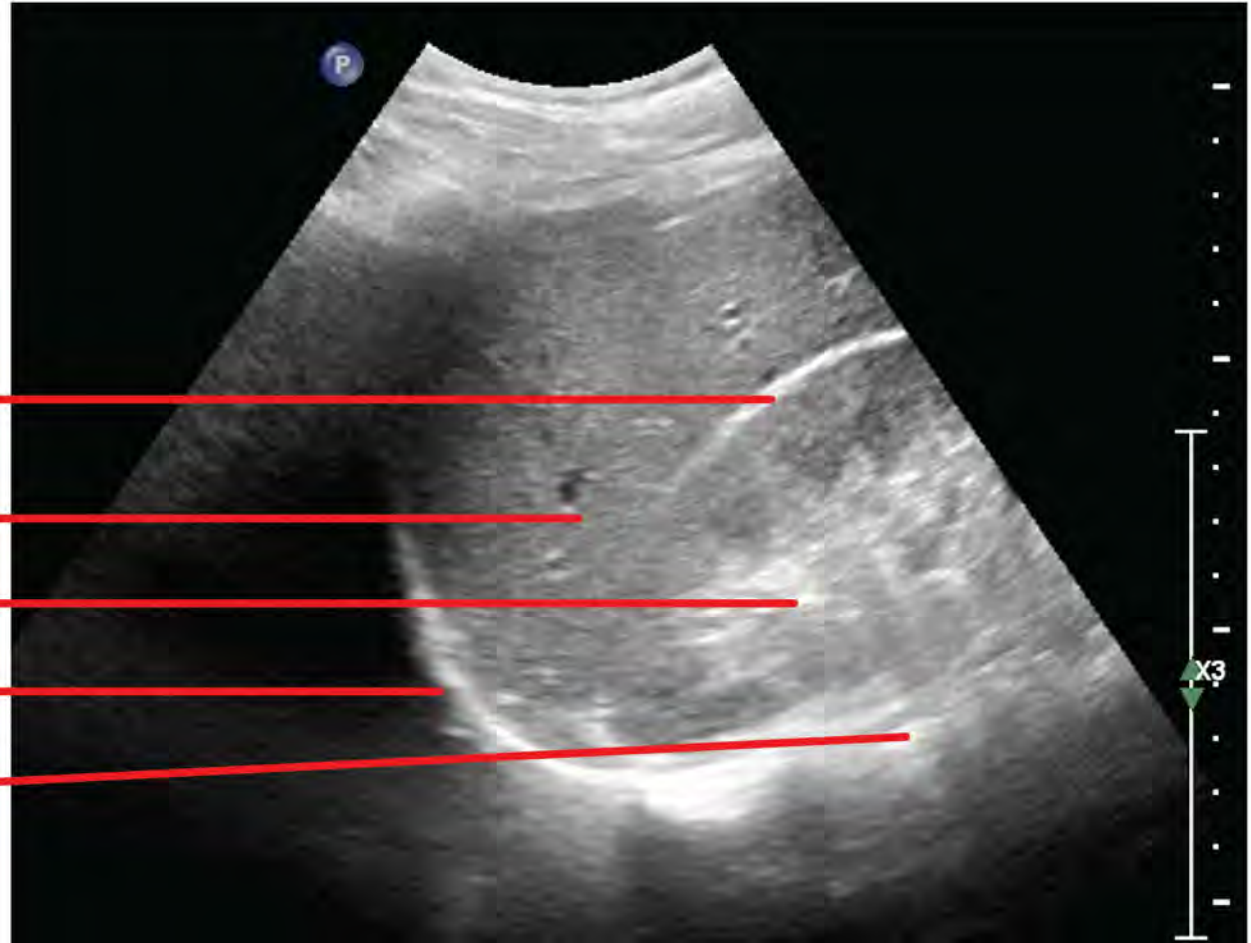
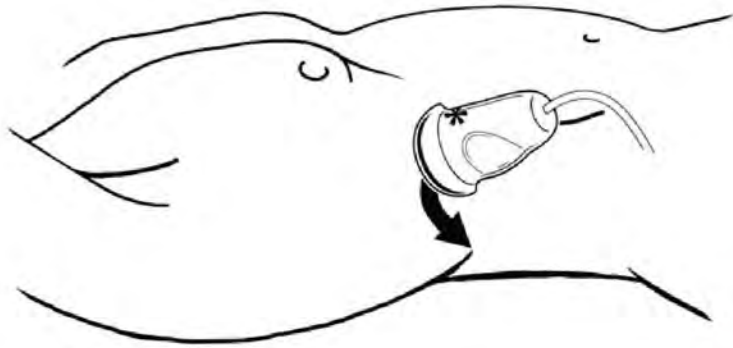
Published by
The Center for Ultrasound Education
Department of Emergency Medicine
Medical College of Georgia
1120 15th St, AF 2020
Augusta, GA 30912

Copyright 2018. All rights reserved.

MCGultrasoundeducation.com

FAST (RUQ) Cuadrante Superior Derecho

(Morrison's Pouch)



Estuche de Morrison
(Morrison's Pouch)

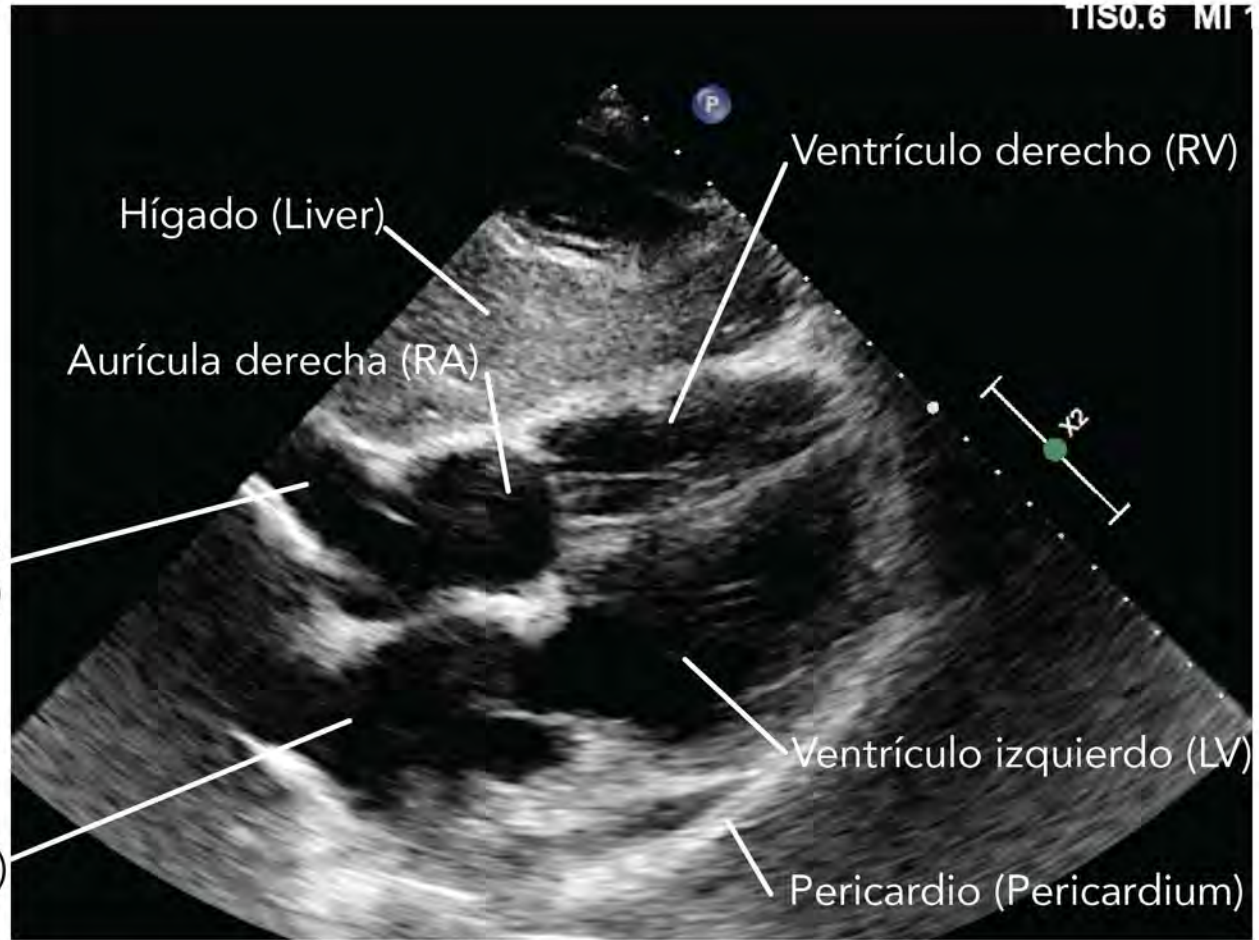
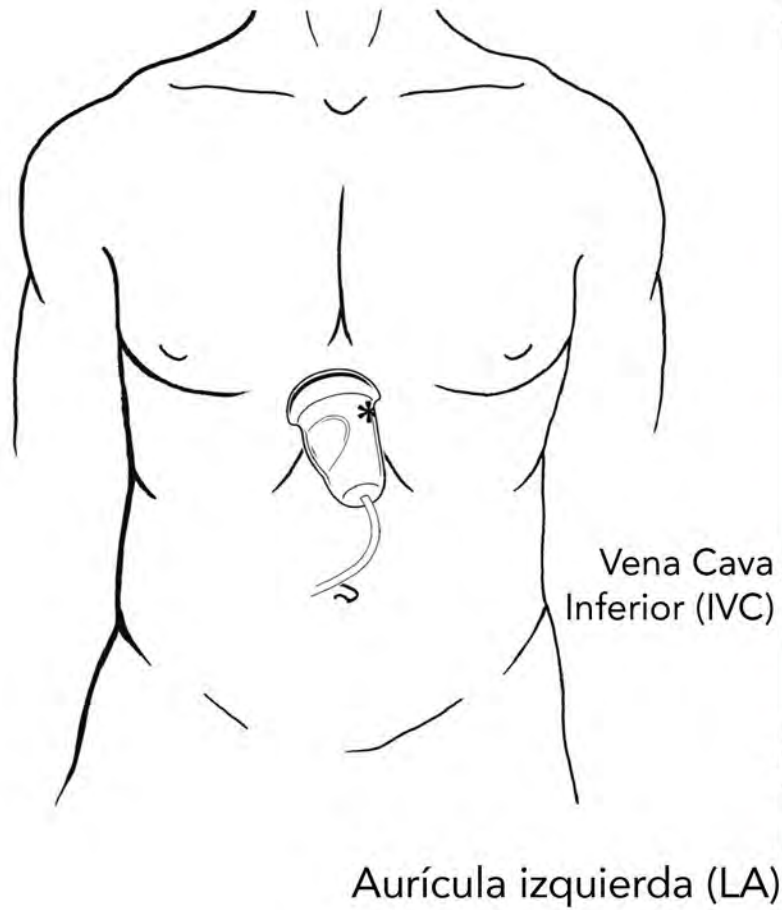
Hígado (Liver)

Riñón (Kidney)

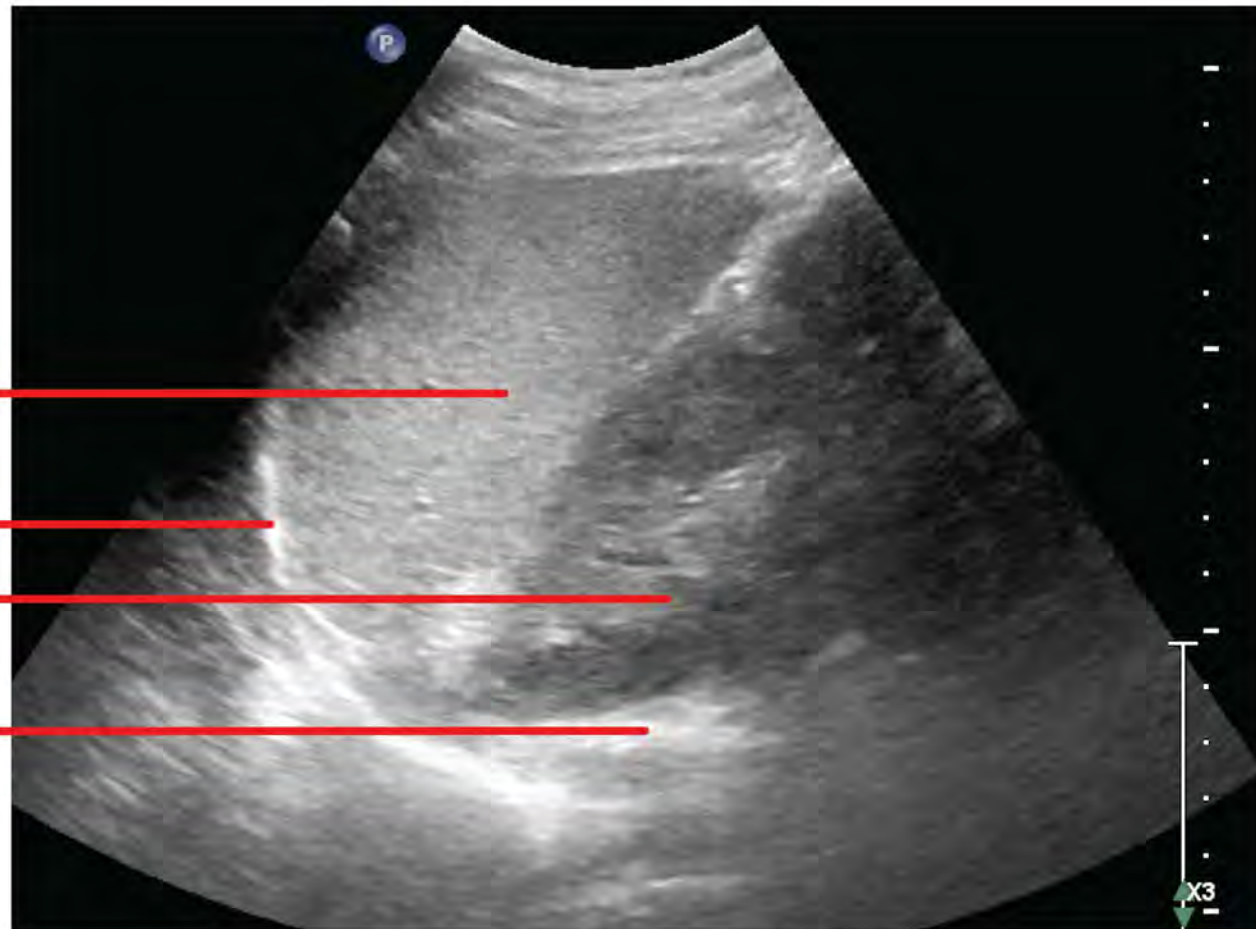
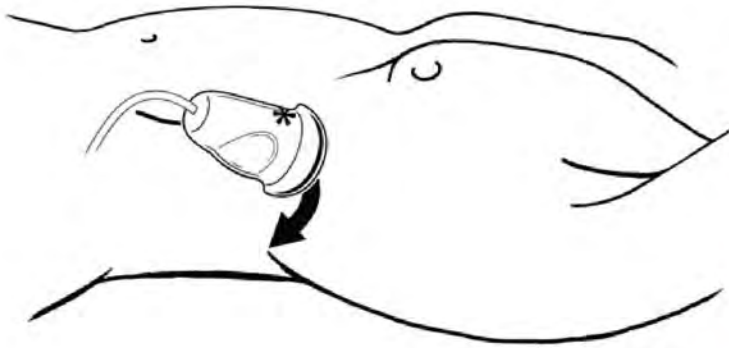
Diafragma (Diaphragm)

Espina (Spine)

FAST (Subcostal)



FAST (LUQ) Cuadrante Superior Izquierdo



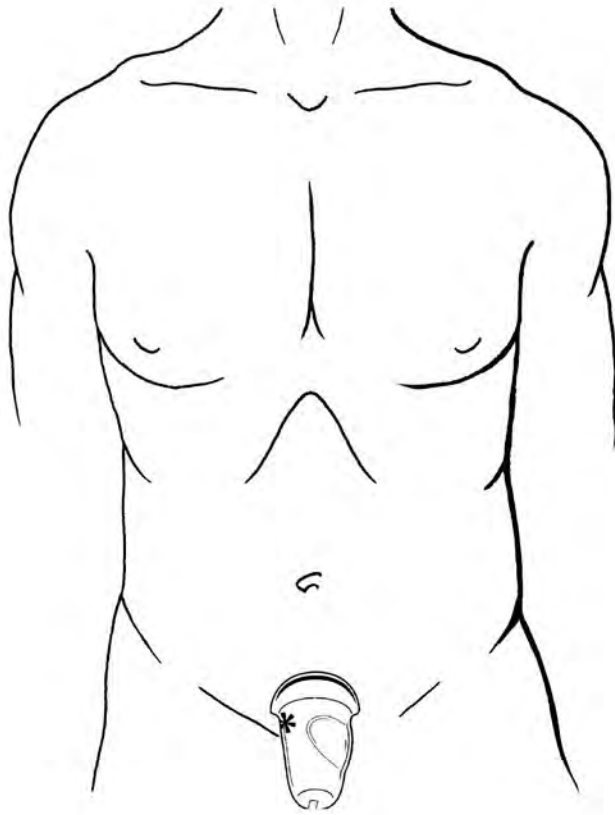
Bazo (Spleen)

Diafragma (Diaphragm)

Riñón (Kidney)

Espina (Spine)

FAST (Pelvis)



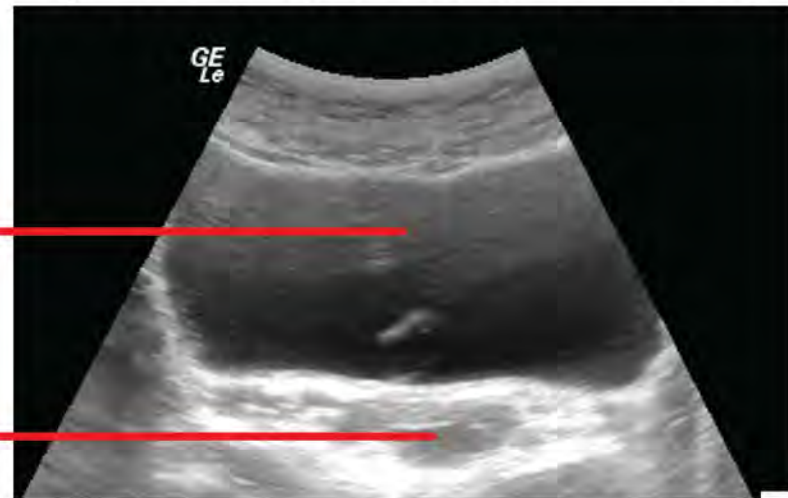
Vejiga (Bladder)

Vagina o útero
(Vagina or uterus)

Eje largo (Long Axis)



Eje corto (Short Axis/Transverse View)

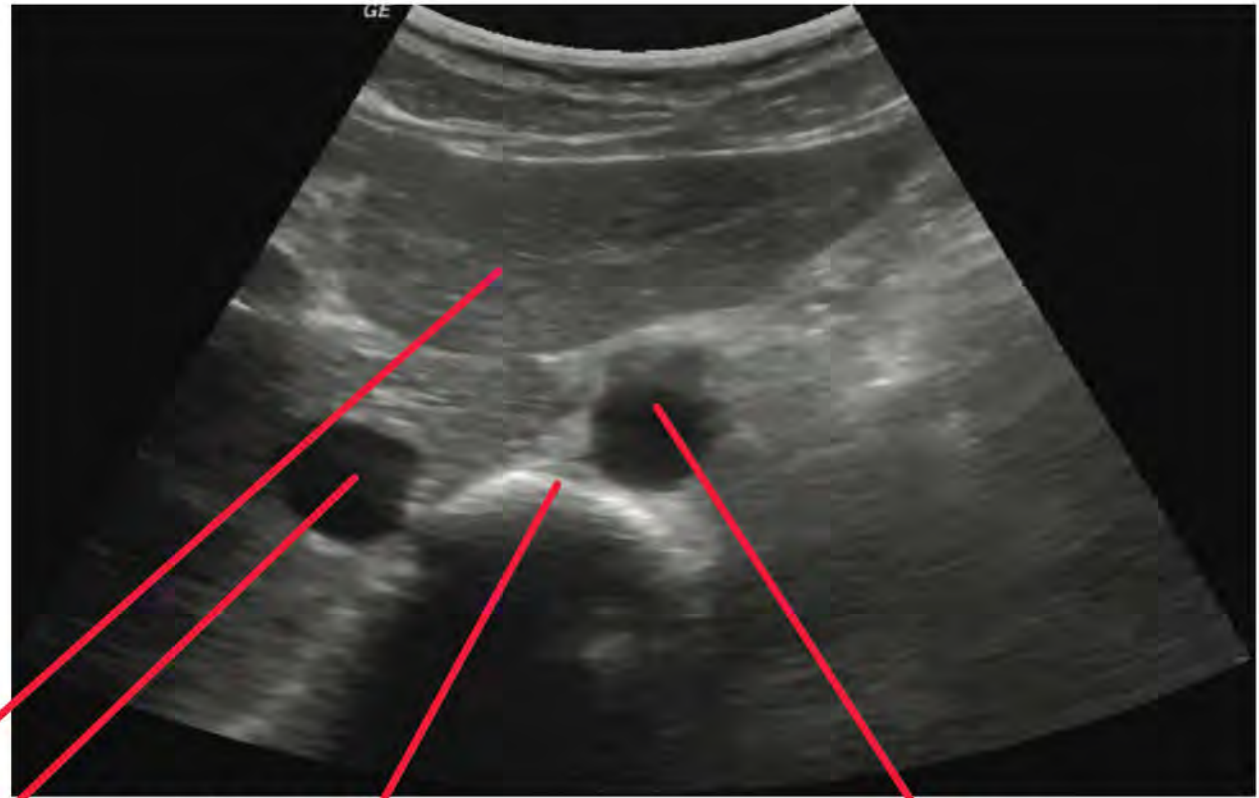
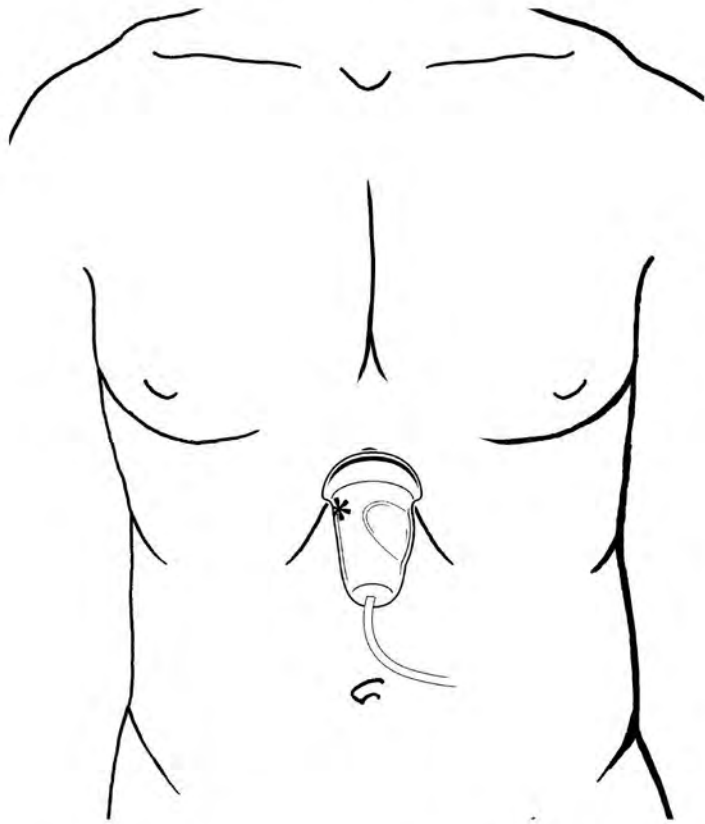


Vejiga (Bladder)

Próstata (Prostate)



Aorta (Proximal)



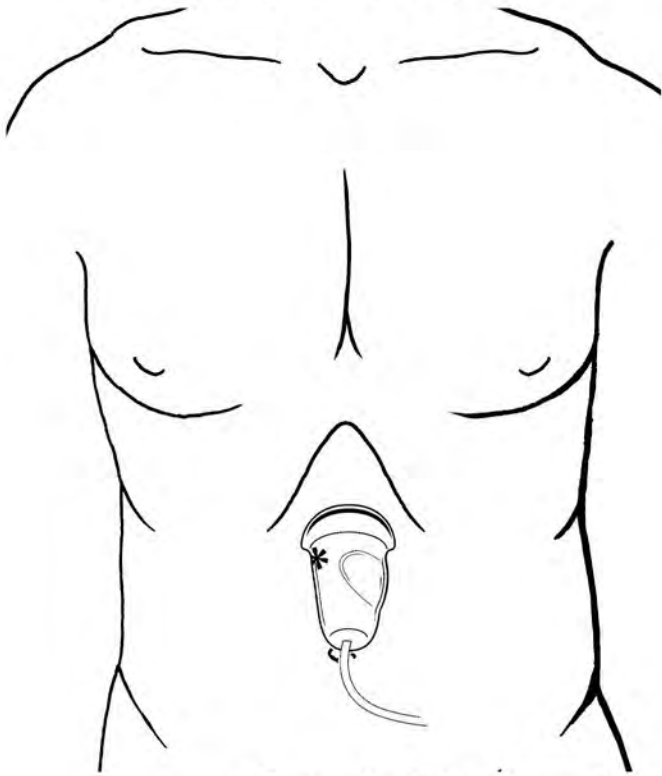
Hígado (Liver)

Vena cava inferior (IVC)

Espina (Spine)

Aorta

Aorta (Medio)



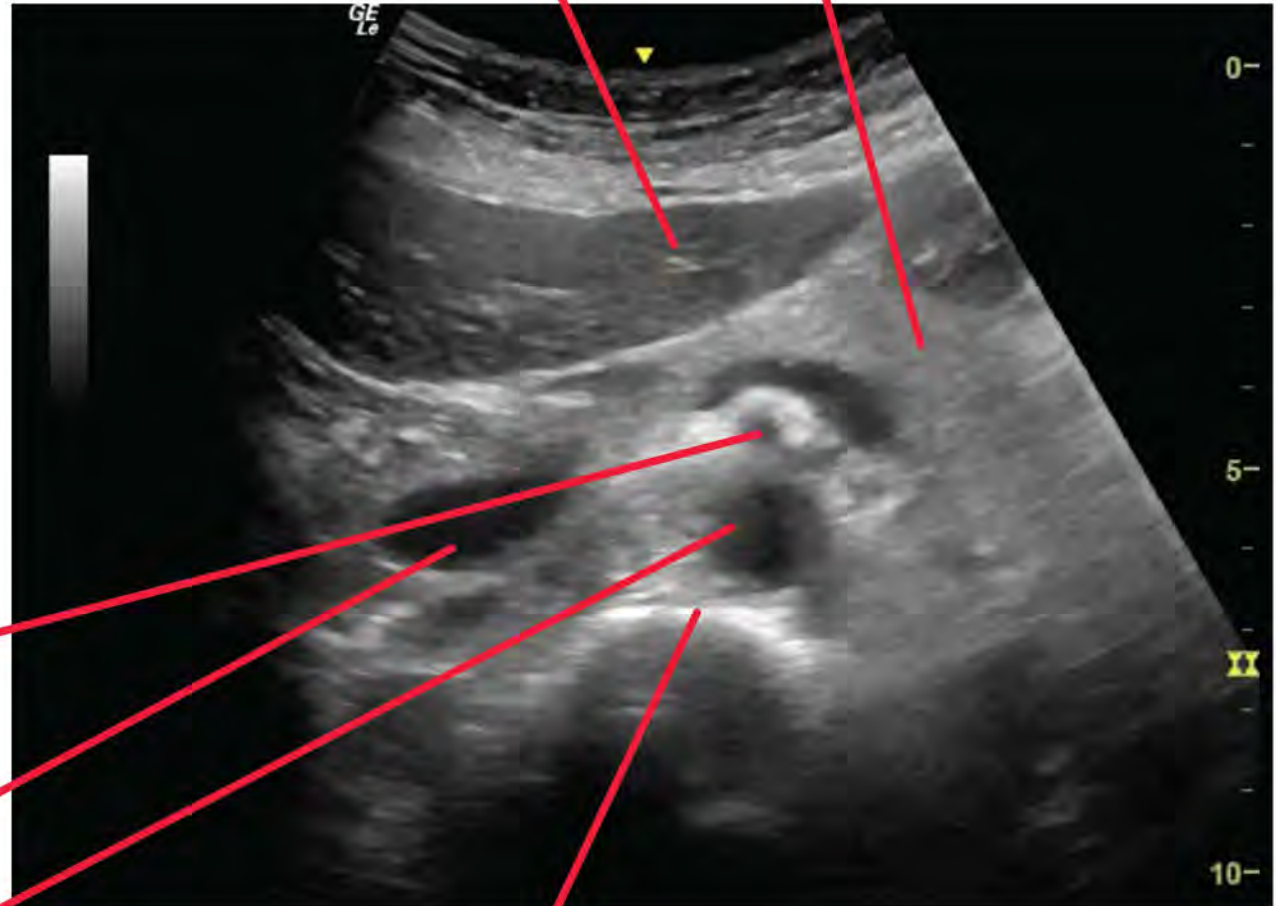
Arteria Mesentérica Superior (SMA)

Vena Cava Inferior (IVC)

Aorta

Hígado (Liver)

Páncreas (Pancreas)



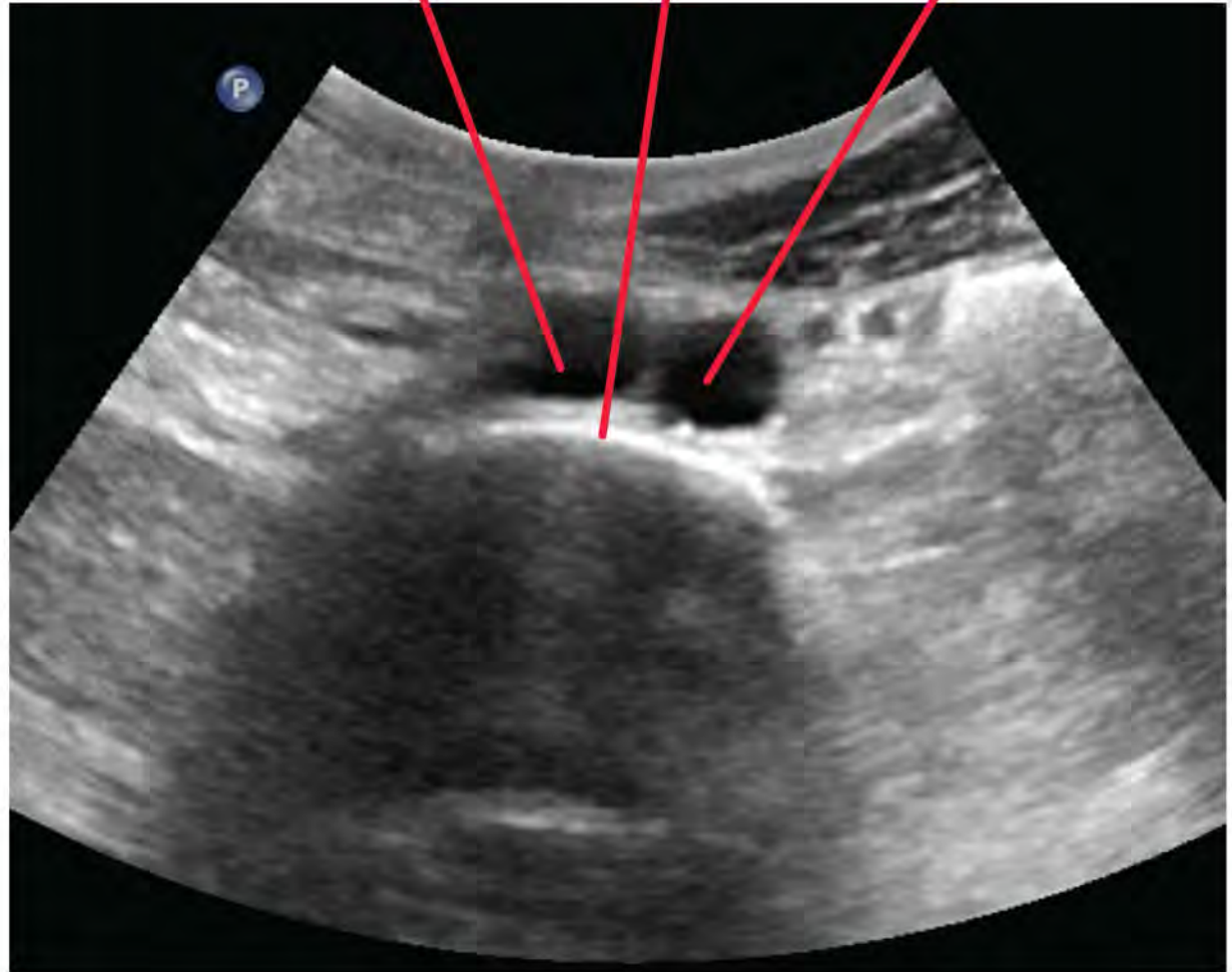
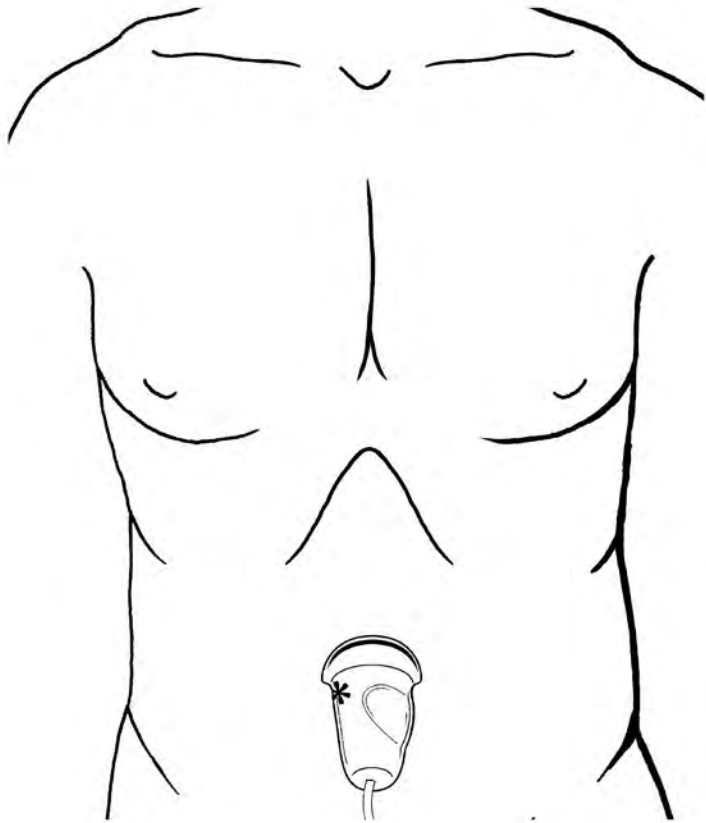
Espina (Spine)

Aorta (Distal)

Vena Cava Inferior (IVC)

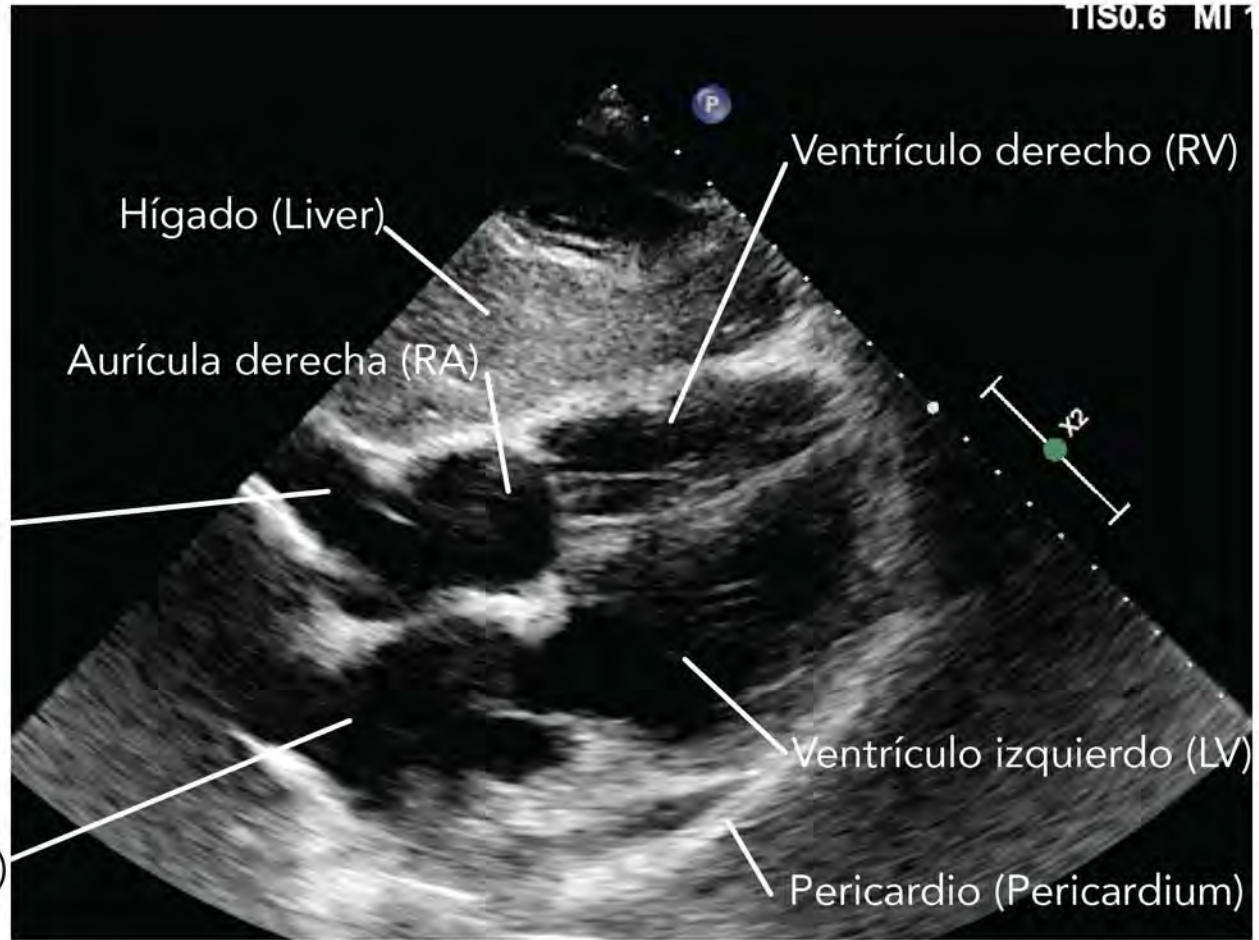
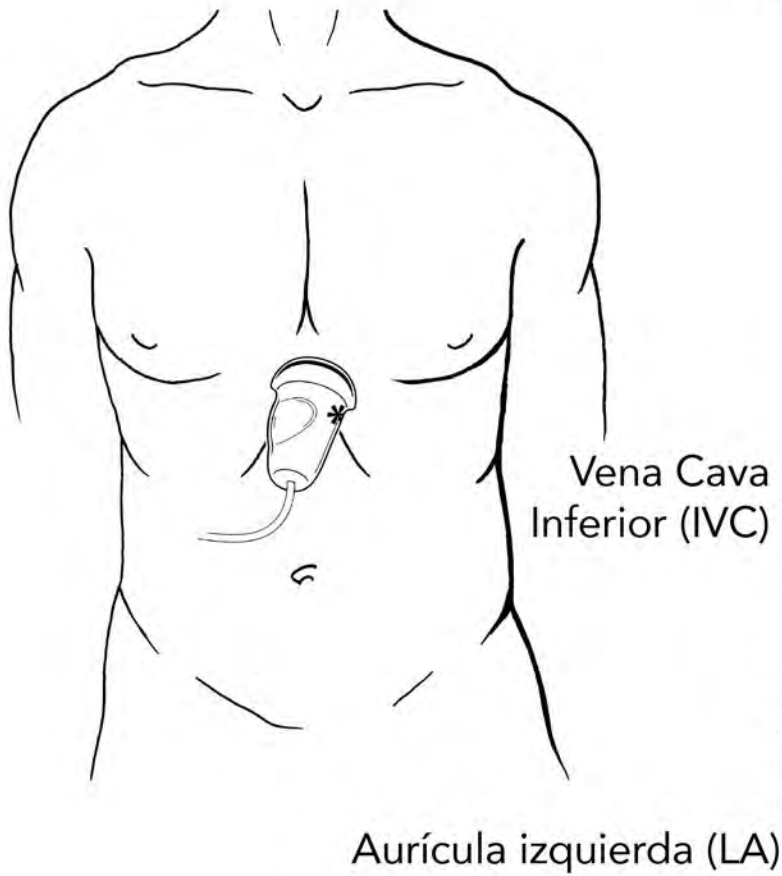
Espina (Spine)

Aorta



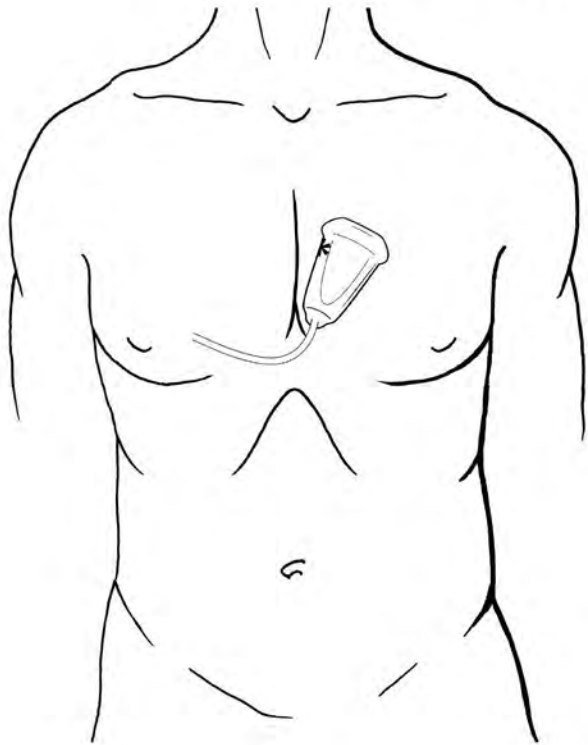
Cardíaco (Subcostal)

Cardiac (Subcostal)



Cardíaco (Paraesternal largo)

Cardiac (Parasternal Long)

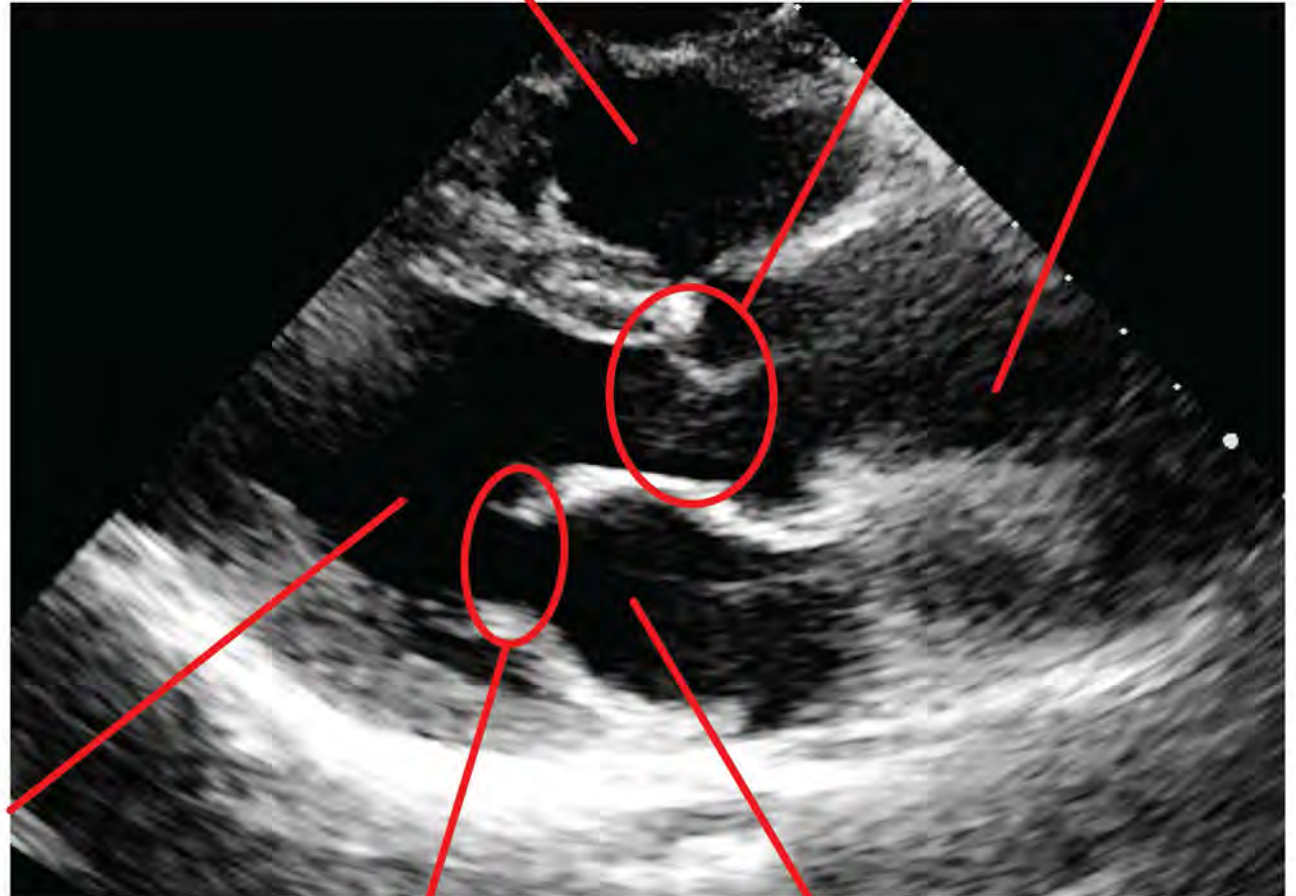


Ventrículo izquierdo (LV)

Ventrículo derecho (RV)

Valvula aortica (AoV)

La Aorta Ascendente (Ascending Aorta)

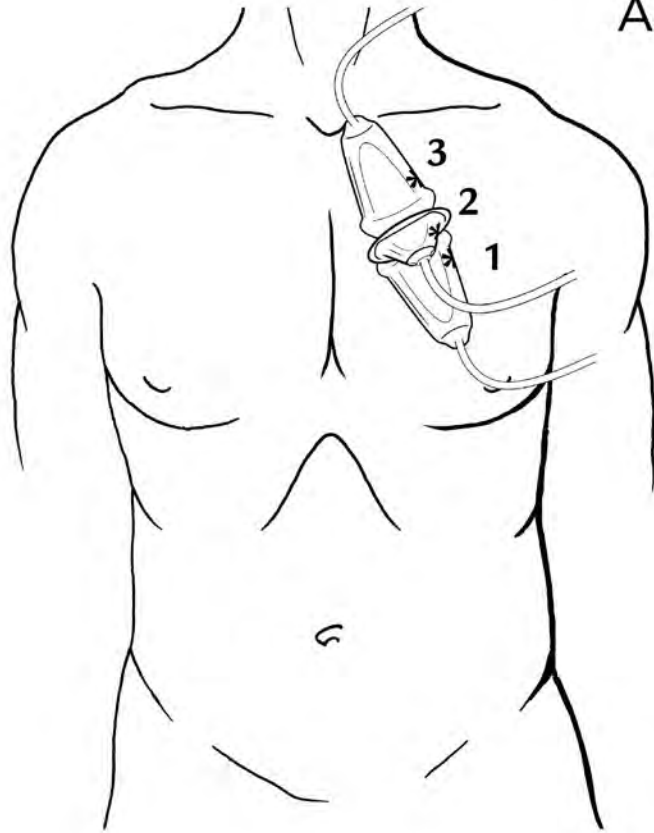


Valvula mitral (MV)

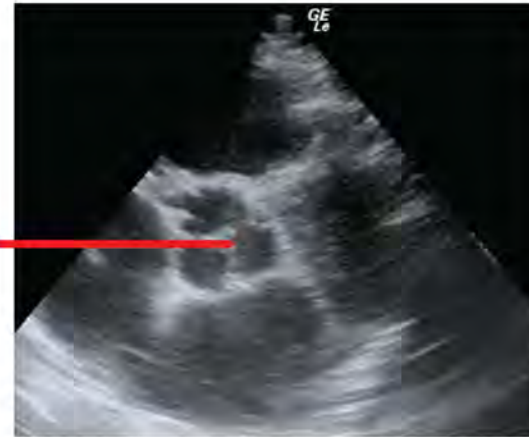
Aurícula izquierda (LA)

Cardíaco (Paraesternal corto)

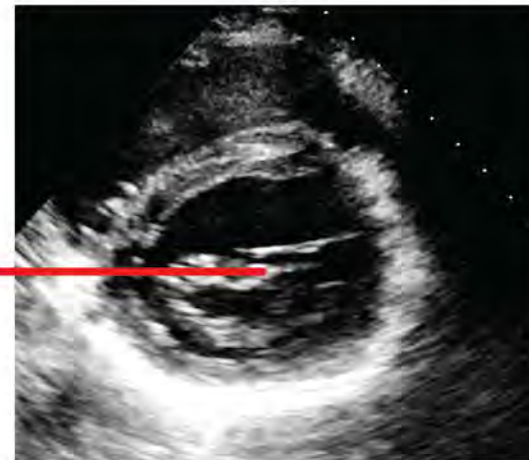
Cardiac (Parasternal Short)



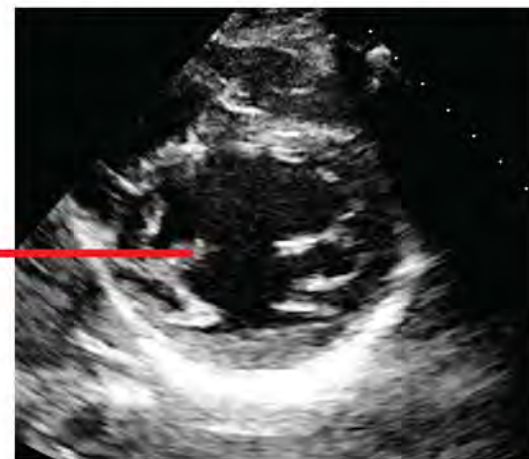
Aórtico (Aortic) Valve



Mitral Valve

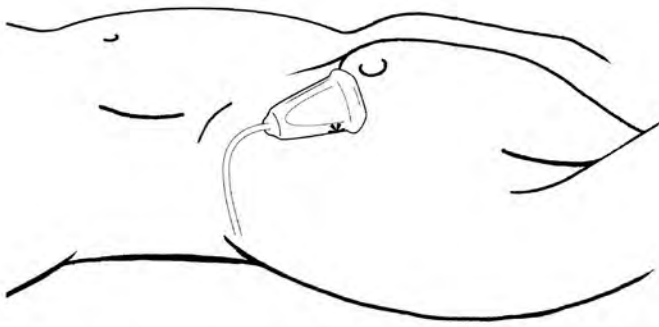


Músculo Papilar
(Left Ventricle/
Papillary Muscle)



Cardíaco (Apical)

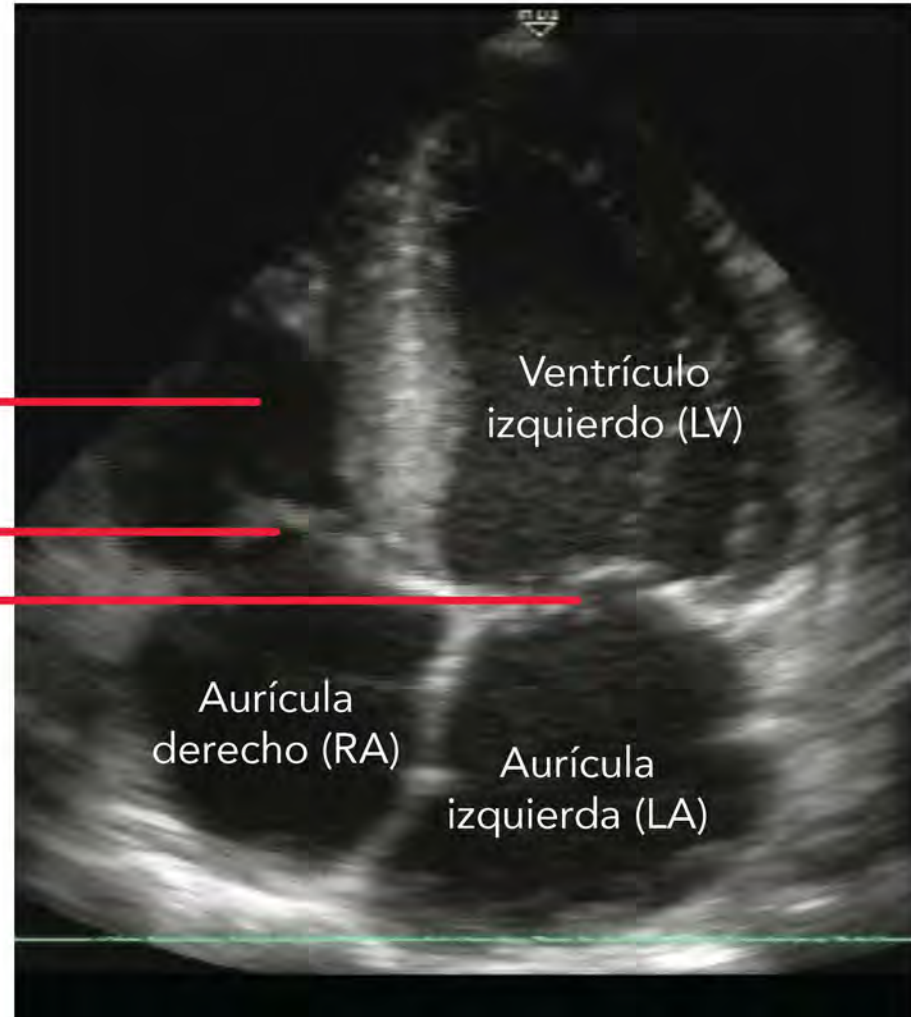
Cardiac (Apical)



Ventrículo derecho (RV)

Valvula Tricúspide
(Tricuspid Valve)

Valvula mitral (MV)

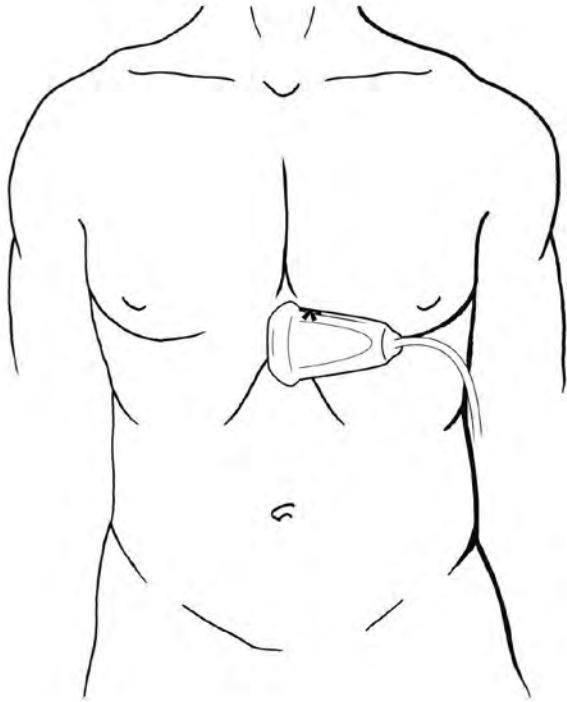


Ventrículo
izquierdo (LV)

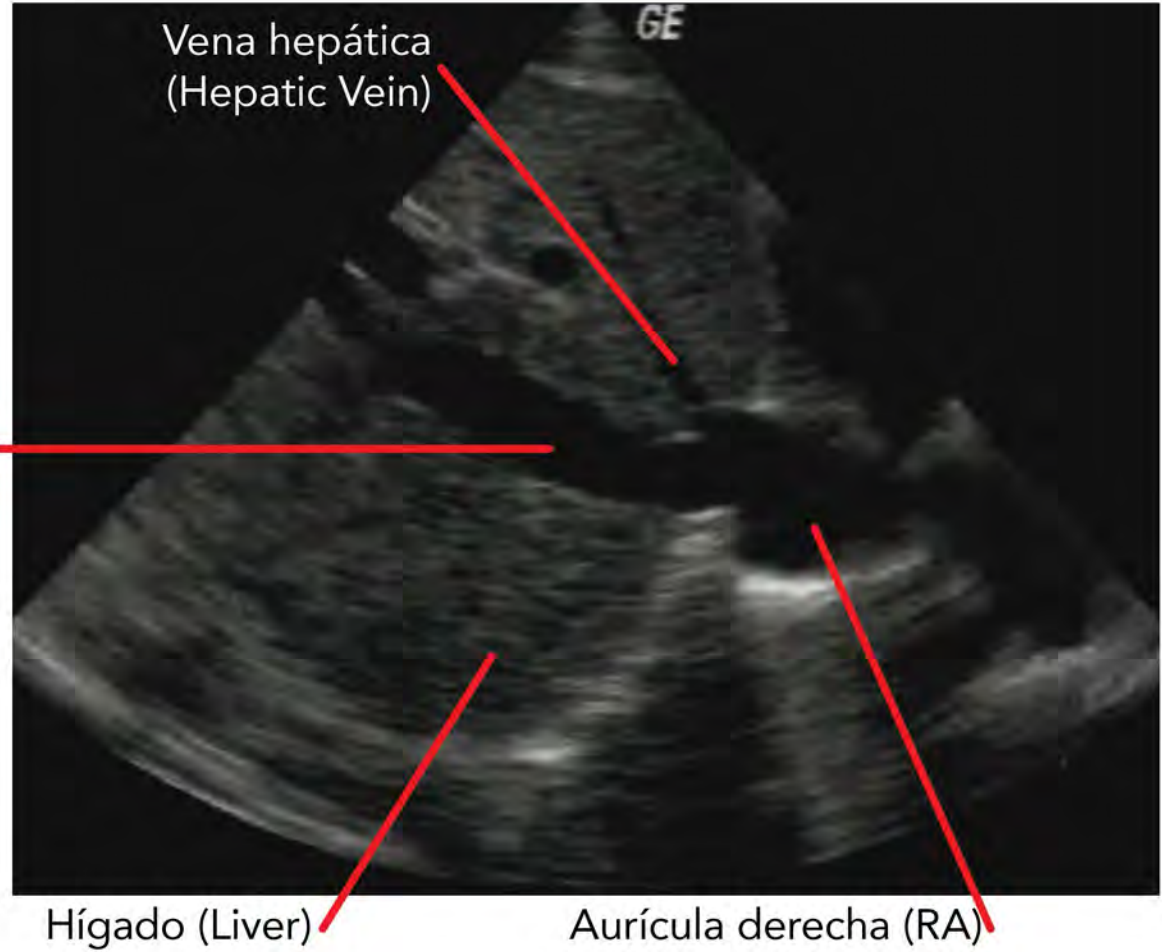
Aurícula
derecho (RA)

Aurícula
izquierda (LA)

Subcostal (IVC)

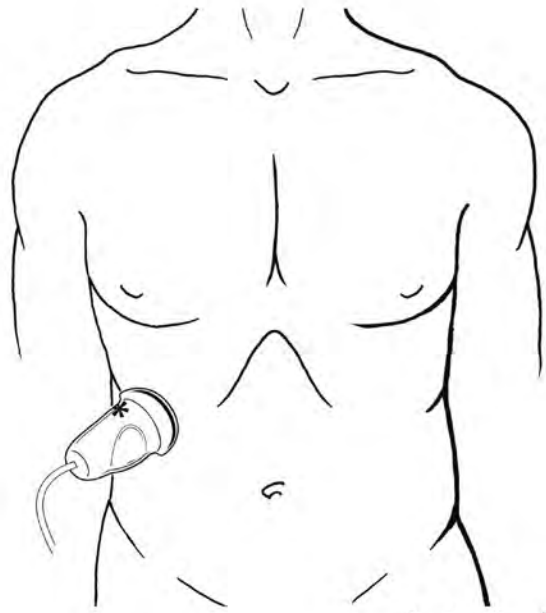


Vena Cava Inferior (IVC)

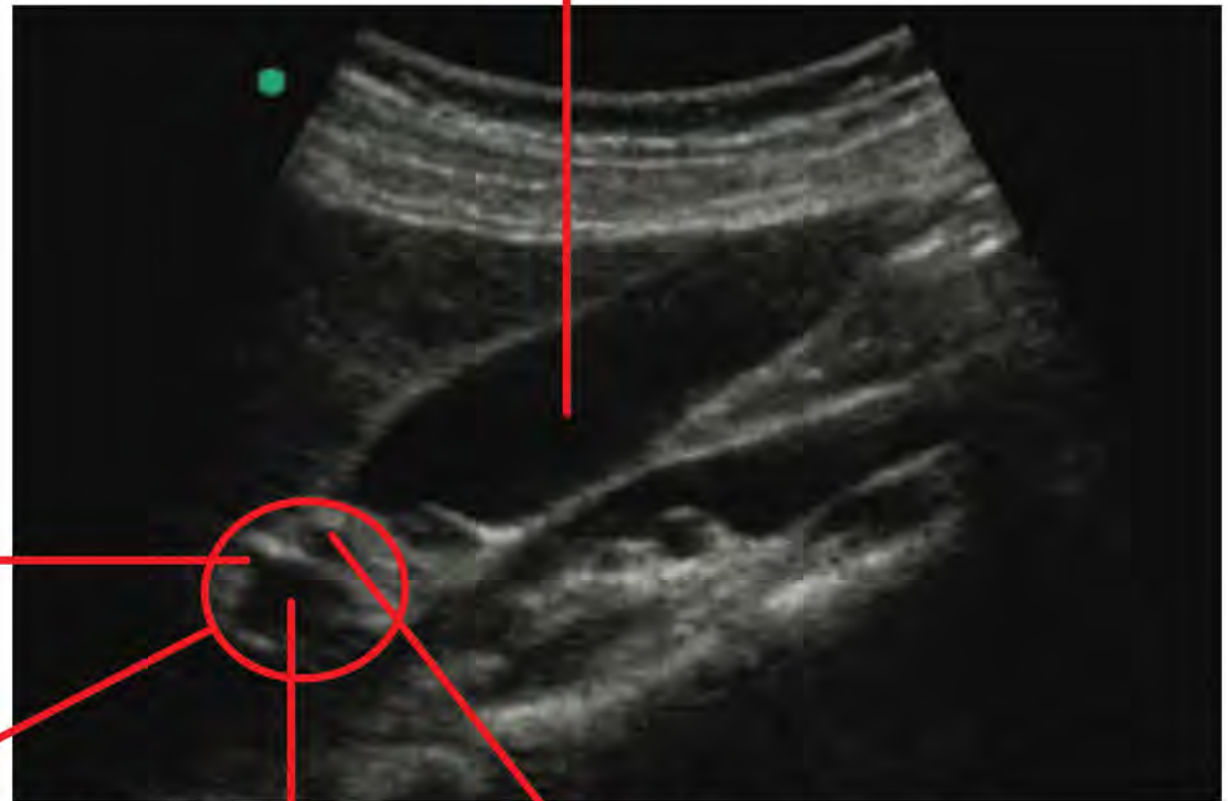


Vesícula Biliar (Eje Largo)

Gallbladder (Long Axis)



Vesícula biliar (Gallbladder)



Arteria hepatica
(Hepatic Artery)

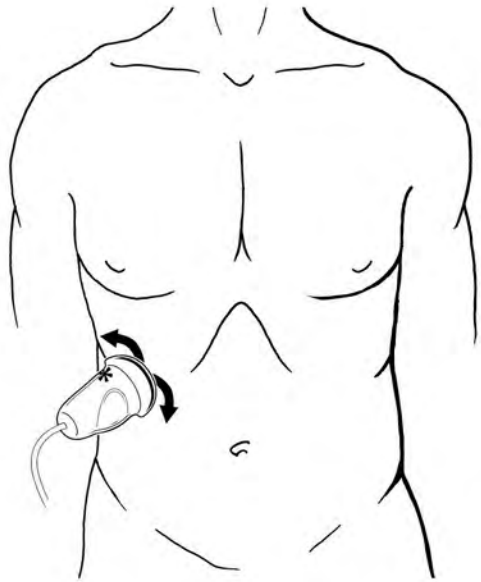
Tríada del portal
(Portal Triad)

Vena porta
(Portal Vein)

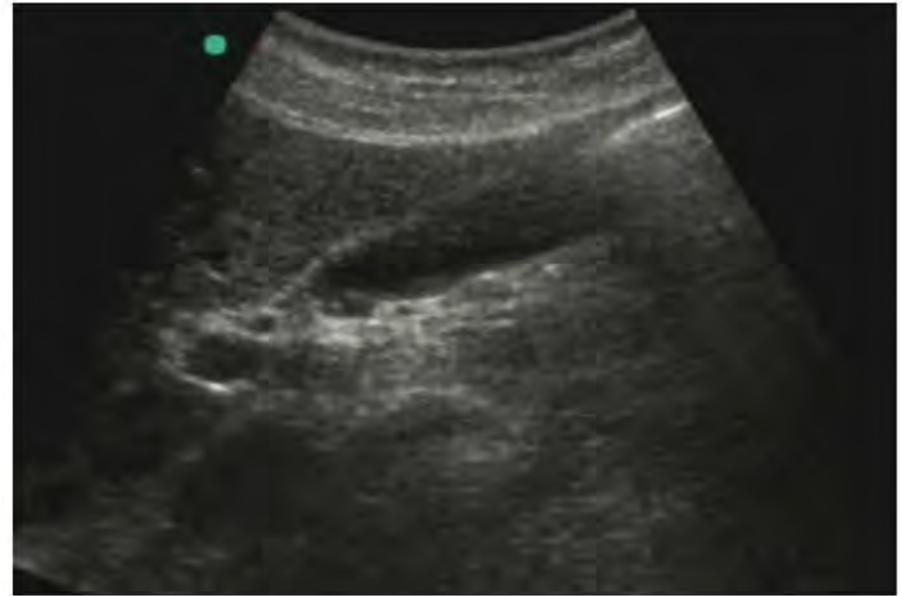
Conducto biliar común
(Common Bile Duct)

Conducto Biliar Común

Common Bile Duct



Eje corto (Short Axis)
Mickey Mouse Signo

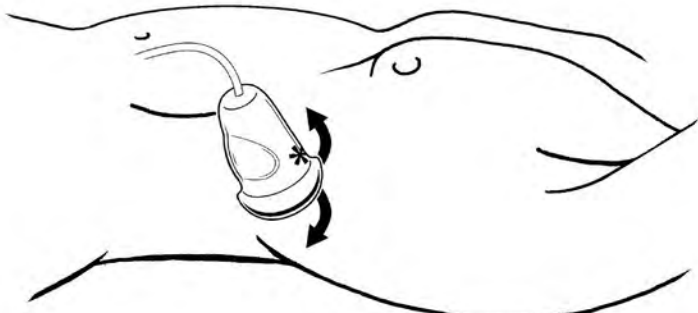


Eje largo (Long Axis)



Riñón Eje Largo

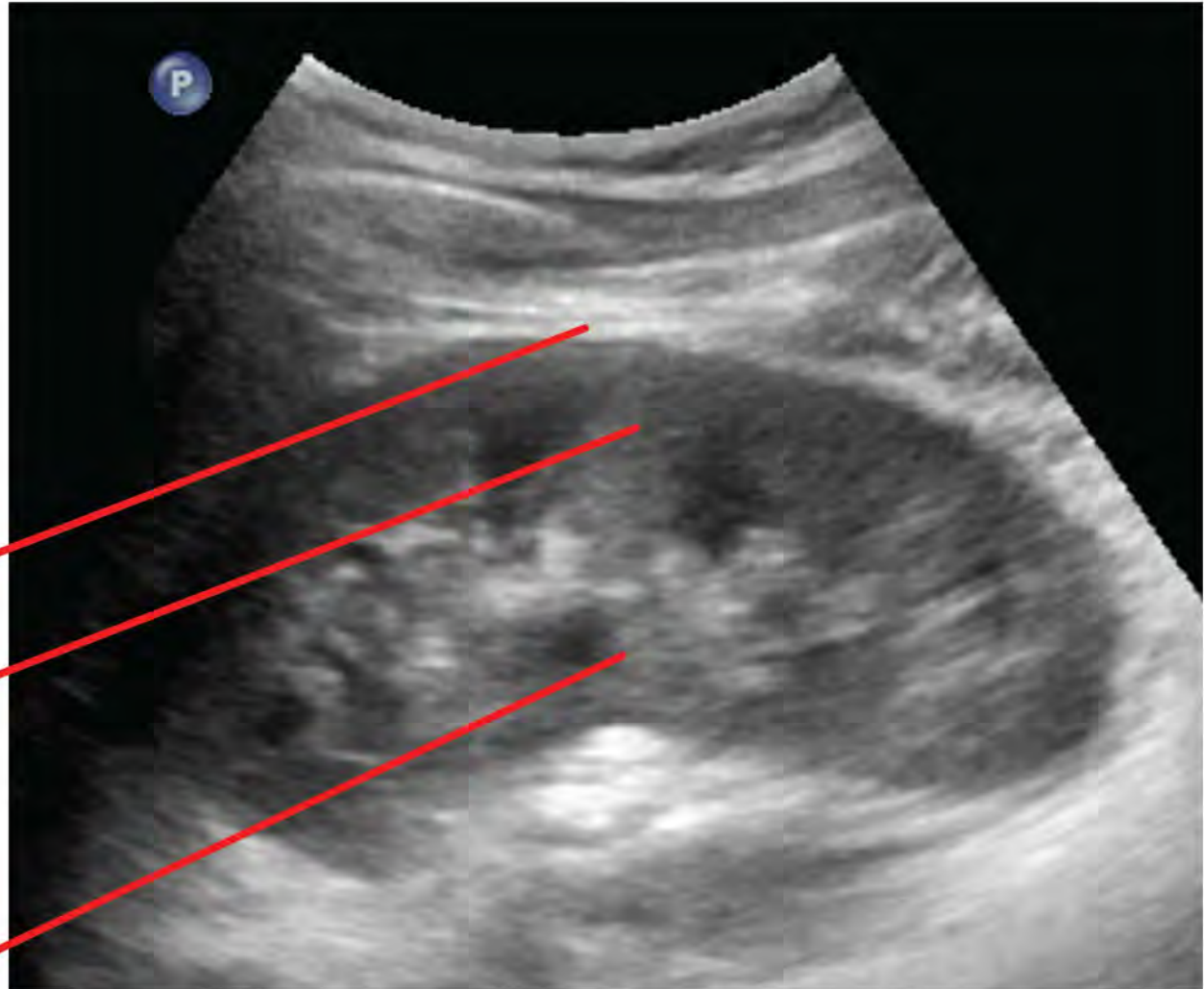
Kidney Long Axis



Cápsula (Capsule)

Corteza (Cortex)

Pelvis (Pelvis)

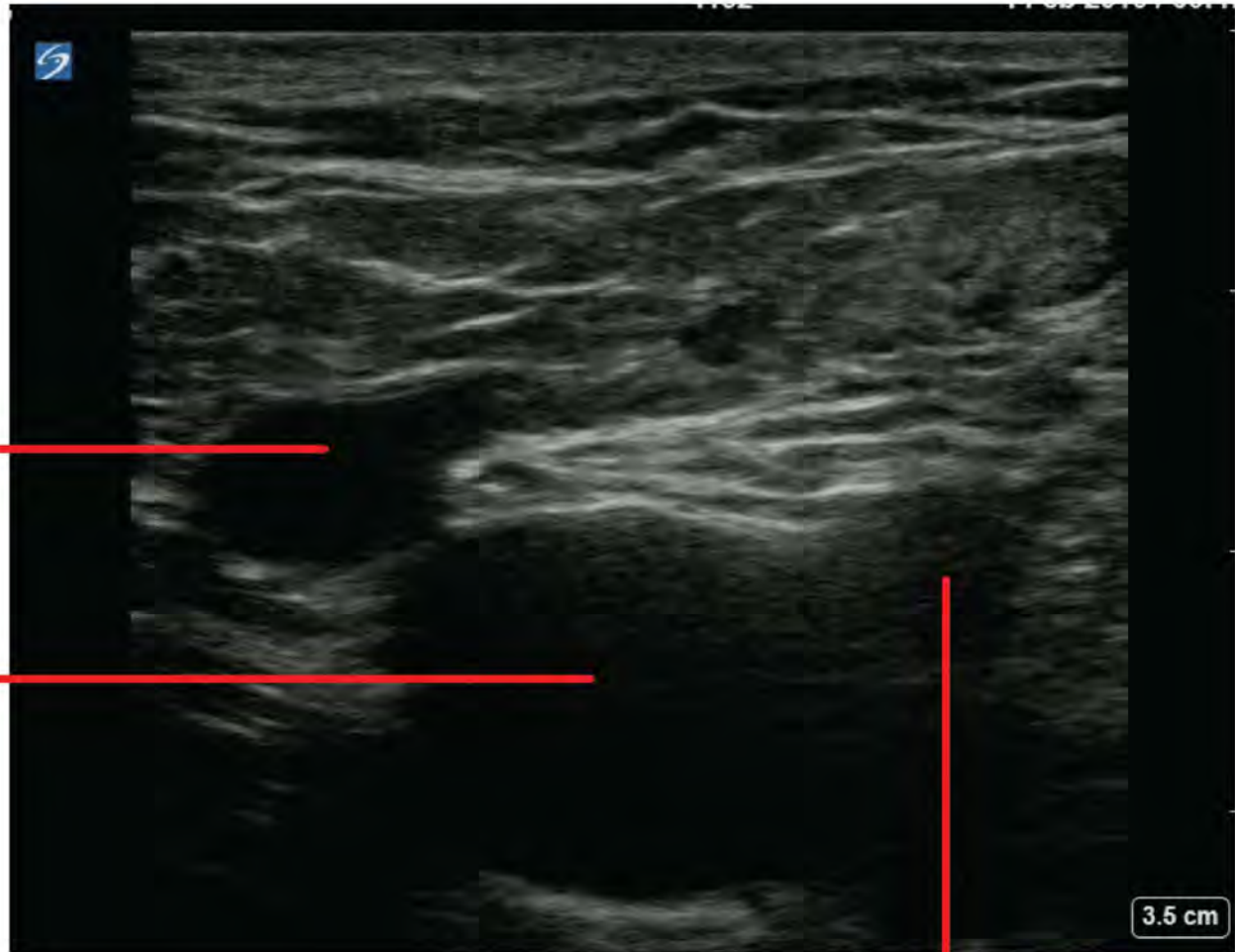


Vena Femoral Común

Common Femoral Vein



Pierna Izquierda
(Left Leg)



Vena Safena
(Saphenous Vein)

Vena Femoral
(Femoral Vein)

Arteria Femoral
(Femoral Artery)



Ultrasound Teaching Reference



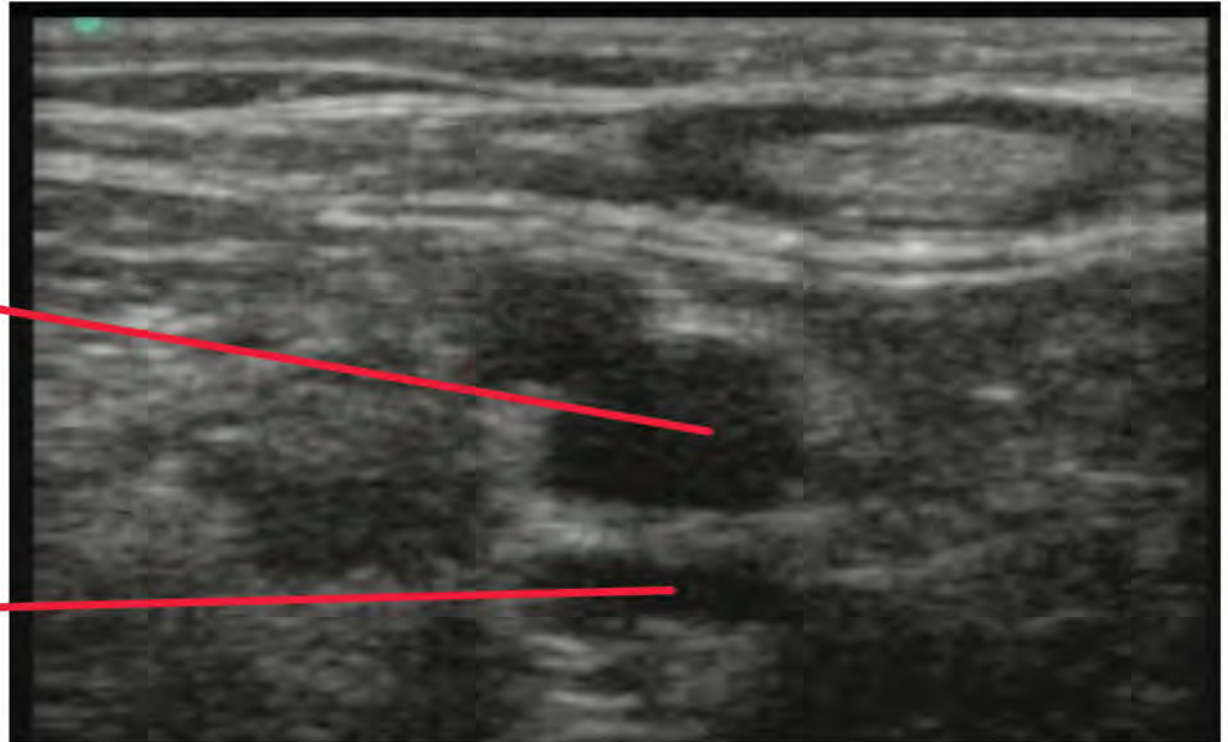
Vena Femoral Común y Superficial

Common and Superficial Femoral Vein



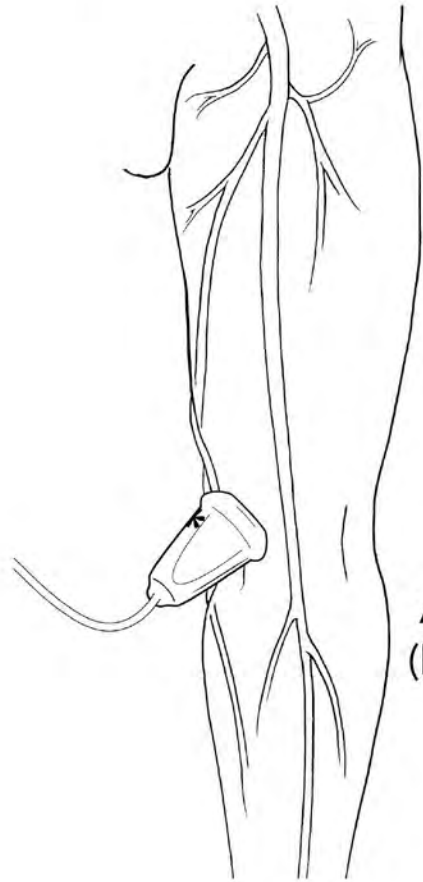
Vena Femoral Superficial
(Superficial Femoral Vein)

Vena Femoral Profunda
(Deep Femoral Vein)



Vena Poplítea

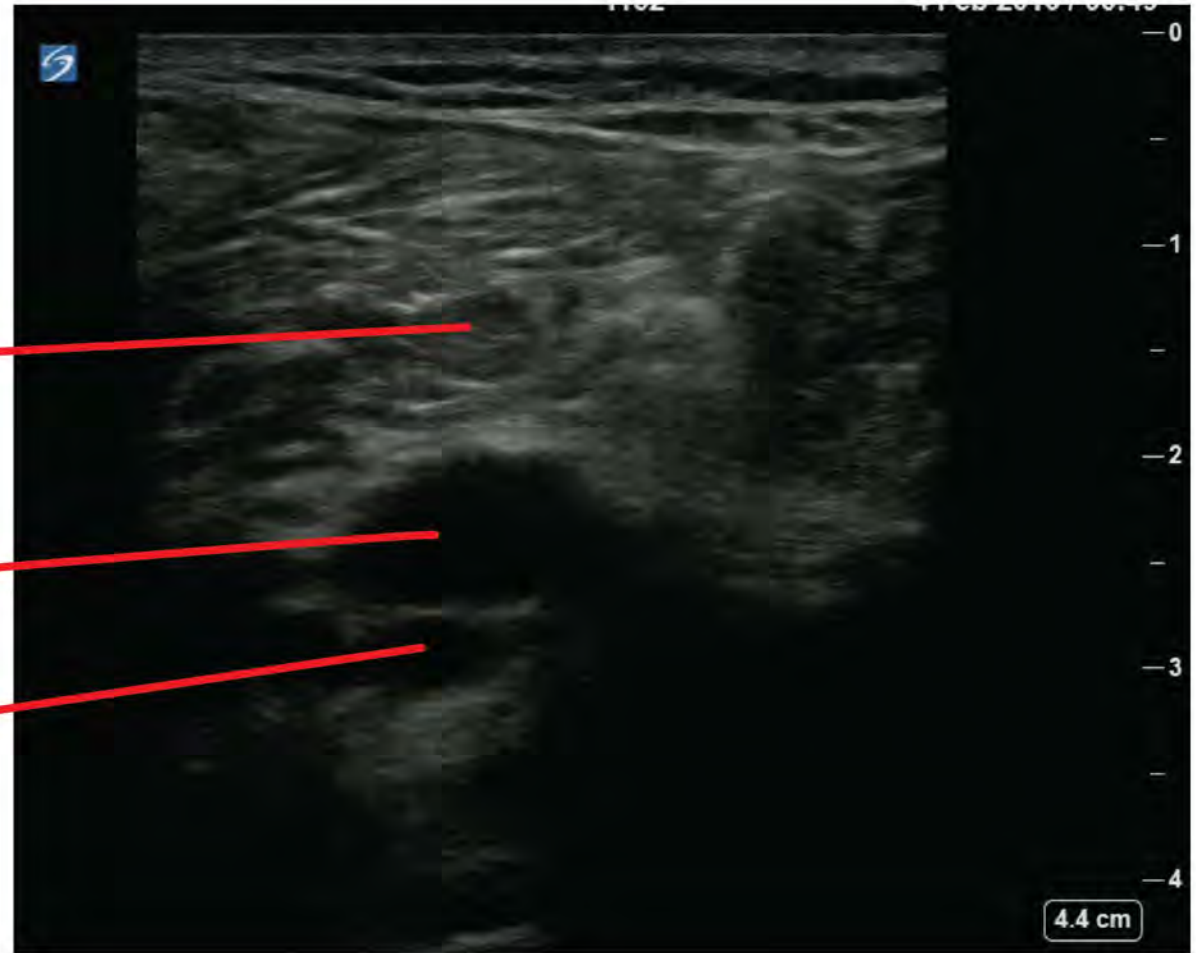
Popliteal Vein



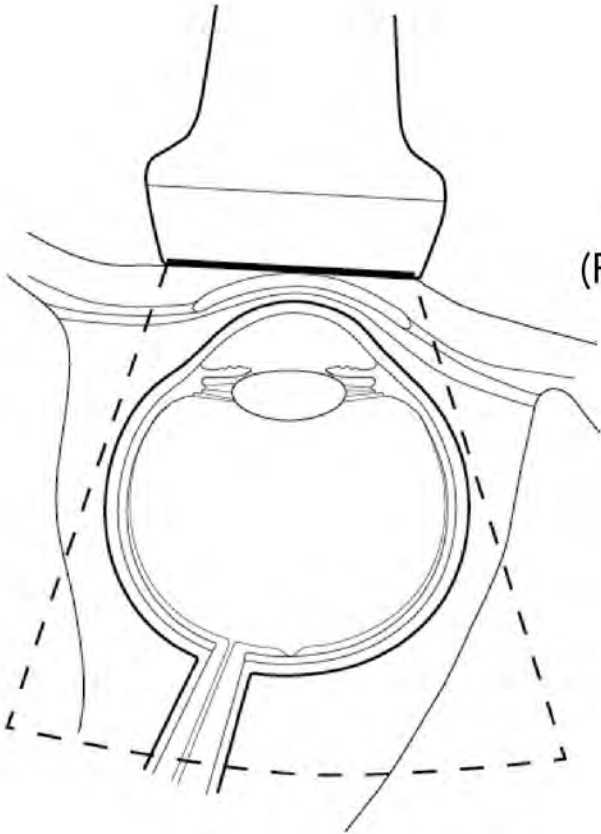
Nervio Tibial
(Tibial Nerve)

Vena Popliteal
(Popliteal Vein)

Arteria Popliteal
(Popliteal Artery)



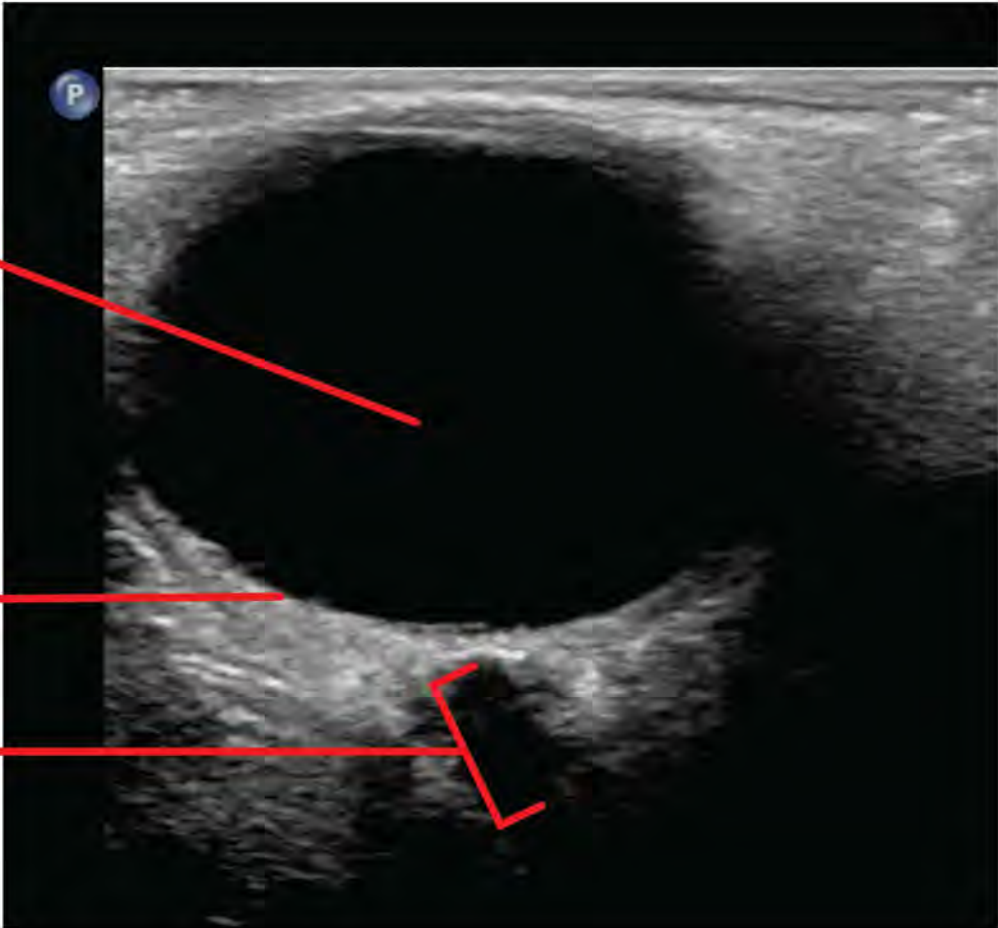
Ocular

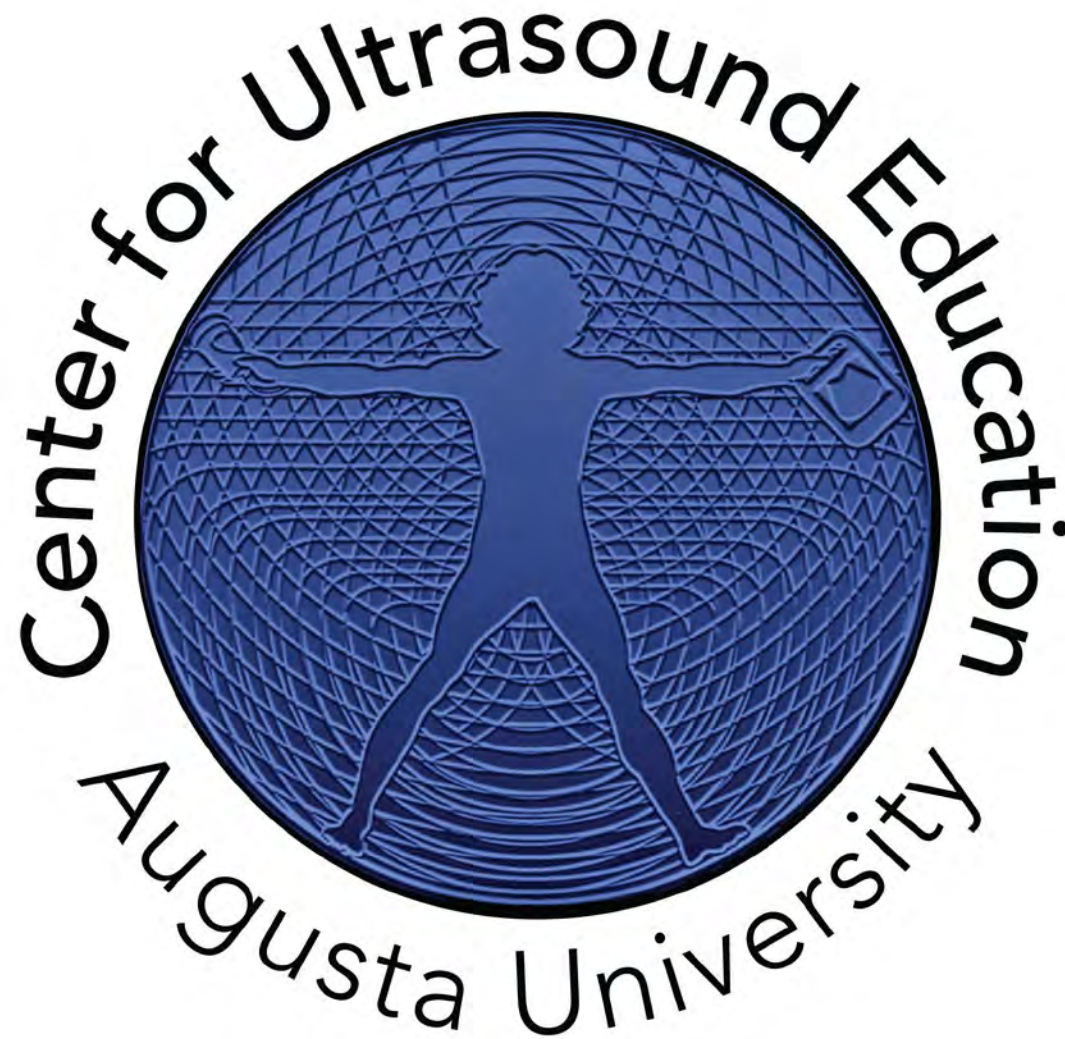


Cámara posterior
(Posterior Chamber)

Retina

Nervio óptico
(Optic Nerve)





MCGultrasoundeducation.com