



AUGUSTA UNIVERSITY

MEDICAL COLLEGE
OF GEORGIA

augusta.edu/mcg/admissions

GREAT DOCTORS,
GREAT MEDICINE,
SINCE 1828.

Albany | Atlanta | AUGUSTA | Brunswick | Dalton | Rome | Savannah

Admissions Bulletin

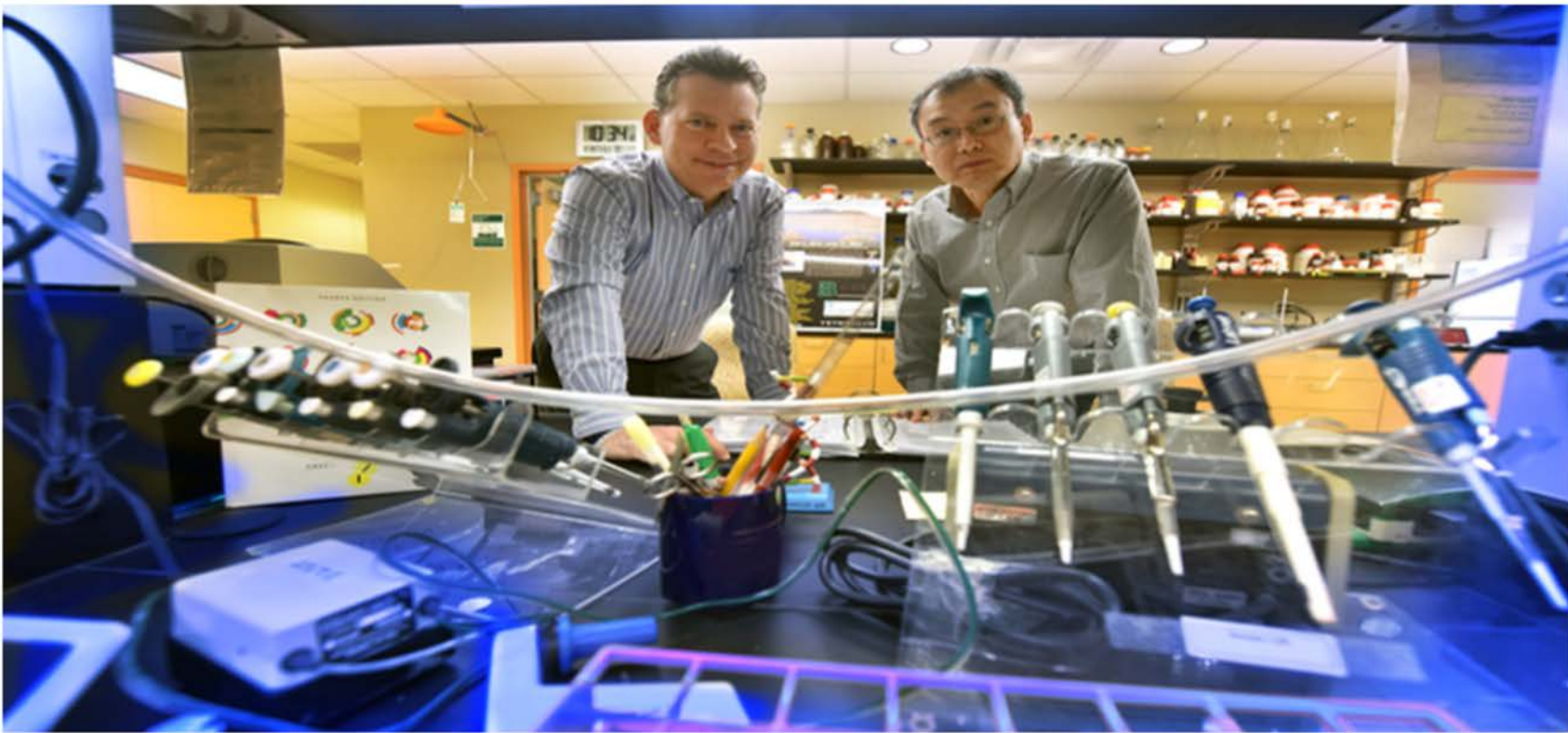
2025-26

Georgia is our campus.

3	– About Medical College of Georgia (MCG)
4	– Dean's Message
5	– Vice Dean for Academic Affairs' Message
6	– Associate Dean's Message
7	– Statewide Impact
8–9	– MCG Curriculum
10–11	– Dual Degrees
12	– Research in Augusta and Savannah
13	– Clerkships and Clinical Enrichment
14–16	– Regional Campuses and Dual Degrees
17	– Professional Scholars Program
18	– Student Support
19	– Traditions and Events
20	– Student Opportunities
21	– Residency and Fellowship Programs
22–23	– Student Life
24	– Applying to MCG
25	– Pathways for Admission
26	– Application Requirements
27	– Prerequisite Courses
28	– Additional Requirements
29–30	– Admission Guidelines
31–32	– Policies
33	– Financial Information
34	– Tuition and Fees
35	– Contact Us

The information in this bulletin is for the Medical College of Georgia at Augusta University. All information, including the curriculum, is subject to change. For general admissions information on other medical schools in the United States and Canada, please refer to Medical School Admission Requirements 2025-26.





Mission

To lead the primary & specialty healthcare needs of Georgia & beyond, with an emphasis on caring for underserved communities, by delivering excellence in individualized medical education, transformative research, innovative patient care & community engagement.

History and Legacy

The Medical College of Georgia (MCG) at Augusta University, Georgia's public flagship medical school, is the 13th oldest medical college in the United States. Founded in 1828 by Dr. Milton Anthony as the Medical Academy of Georgia, MCG began classes in 1829 with seven students and three faculty members and graduated its first class of four students in 1833. Further, MCG admitted its first female medical student, Loree Florence in 1921 who later became the first female medical graduate in the state. Almost two hundred years later, MCG has transformed into a true academic medical center focusing on biomedical education, innovative approaches to clinical care, and community service. With 3,756 total faculty, including 2,955 volunteer clinical faculty serving across Georgia, 23 academic departments, and the recently expanded medical student entering class size of 304, MCG continues to expand its footprint and statewide impact. In 2005, MCG opened its first regional clinical campus in Albany, GA where students are exposed to health inequities and experience clinical practice one-on-one with clinicians outside of the academic medical center in Augusta. Following the success of the Southwest (Albany) campus, MCG opened two additional regional clinical campuses: our Southeast campus in Savannah and Brunswick and our Northeast campus in Rome and Dalton. Currently, MCG students have two full four-year campus locations to choose from: our main campus located in Augusta, and Southeast campus located on the Georgia Southern University campus in Savannah. MCG is the leading provider of physicians of the four Georgia-based medical schools, and approximately 50% of MCG graduates remain in the state to practice, ranking 16th in the nation in the percentage of physicians retained in the state from public undergraduate medical education.



DEAN'S MESSAGE

Please let me congratulate you on your decision to become a physician. While it is not a profession for the faint of heart, it is without question among the highest callings.

I wanted to be a doctor as far back as I can remember, the first in my family. I also remember being sprawled out on the floor as a child with terrible ear infections and my pediatrician rescuing me from those painful days.

People sometimes ask if I could go back, what I would be. I would choose medicine again and again because of what it has permitted me to experience and to find. Because it has opened doors into the lives of so many

brave individuals who we call our patients and because each day it is a challenge worth taking.

I am very glad that you are considering taking on this great challenge and privilege right here, at Georgia's public medical school. While I realize there are limited history enthusiasts among us, please know that the Medical College of Georgia has a near 200-year-old legacy of educating exceptional physicians.

I came to MCG to study neurology and stroke after finishing my undergraduate medical education at the University of Maryland School of Medicine. I found here a professional home and I have never left it.

MCG is a dynamic and storied place that offers the best of many worlds. We have the 9th largest medical school class in the nation but still a very personal approach to medical education. While we recruit great educators, scientists and clinicians from all over, we tend to attract faculty who really do love to teach medical students; who understand that learning in reality is a two-way street and that we learn as you learn.

We have a true statewide educational presence that offers tremendous variety as well, from clinical experiences in complex care facilities like our own teaching hospitals to small town solo practices. In fact, we have a huge and growing network of volunteer faculty across Georgia, many of whom are MCG graduates, who enable us to provide such a diverse and intense learning environment.

By the time you graduate from MCG, you will have sufficient experience to decide what type of medicine you want to practice, and you will be prepared for and competitive in whatever you choose. I believe, you also will have a permanent home, not necessarily where you will stay, as I have, but a medical school to which you will remain connected and of which you will be proud.

I wish you the best as you make these important decisions about your future and promise that MCG will be here to help you fulfill your goals and your dreams.

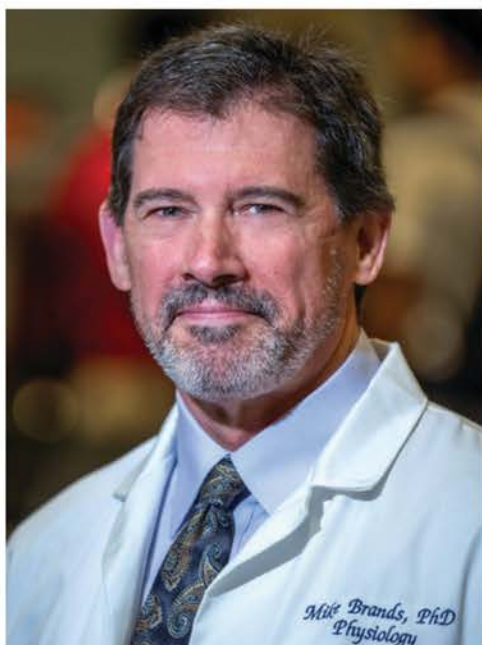
Most respectfully yours,

A handwritten signature in black ink, appearing to read "David C. Hess".

David C. Hess, MD

Dean, Medical College of Georgia | Executive Vice President for Medical Affairs and Integration at Augusta University | Presidential Distinguished Chair





FROM THE VICE DEAN FOR ACADEMIC AFFAIRS

We are delighted to help you explore the unique opportunities waiting for you at the Medical College of Georgia. The singular focus of our faculty and staff is ensuring that you achieve your goals in the medical profession.

Welcoming your medical class will be a faculty with integrated professional diversity that brings broad expertise and perspective to your education from day one. Gone are the days of basic science lectures for

a year before progressing to clinical-oriented content and activities. Your first week at the Medical College of Georgia will see you engaged in: small-group, case-based learning facilitated by basic science and clinical educators, small-group, patient-centered learning under the direction of clinical preceptors, and large-group lectures that integrate clinical medicine and basic science mechanisms organized around weekly themes. You also will begin seeing real patients and learning the electronic medical record system in your first weeks using telemedicine. In addition, your patient-centered learning activities will include ultrasound in our one-of-a-kind ultrasound program, patient encounters using standardized patients, and training in our Interdisciplinary Simulation Center. Again, this is from the very beginning!

And now a little bit more about the outstanding people here to help you learn. The physicians in the classroom and working with you in small-group and patient-centered learning activities also are active in clinical practice, thus sharing with you their up-to-date, state-of-the-art clinical know-how. Likewise, a large cohort of our basic science educators are NIH-funded biomedical research scientists, once again sharing with you their state-of-the-art expertise. Integrated with these two groups is a team of professional medical educators who use modern education approaches to interweave all this together.

Behind this tremendous education experience is a team of professionals dedicated to supporting you. Part of that team are the 2 faculty mentors who lead each group of 15-20 students from each class, who come together in each of our Learning Communities (LC) that is part of our YOU+ curriculum. Each LC has dedicated space in the J. Harold Harrison MD Education Commons that is a place for relaxation, camaraderie, and LC activities. Our offices of Career Advising, Diversity, Equity, and Inclusion, and Academic Advising all are led by practicing physicians dedicated to helping you navigate medical school. Likewise, our office of Student Affairs, with its Class Deans, is a group of physicians who devote themselves to ensuring you have all the support you want or need.

It may be hard to imagine, but all of these dedicated individuals, along with scores of professional staff, work year-round to make sure you have the best medical education experience possible. We all are here for you, and we cannot wait to welcome you to the Medical College of Georgia!

Sincerely,

Michael W. Brands, PhD
Regents' Professor of Physiology | Vice Dean for Academic Affairs

FROM THE ASSOCIATE DEAN OF ADMISSIONS

Thank you for your interest in the Medical College of Georgia. Founded in 1828 as the nation's 5th public medical school, we have a rich and long-standing tradition of educating excellent physicians. Whether the focus is on patient care, academics, research, or a combination of these, our graduates have a proven track record of success and leadership in our community, state, and across the nation.

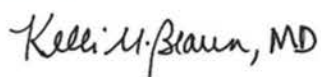
Despite ranking as one of the nation's largest medical schools by class size, MCG is not a one-size-fits-all model and continues to evolve along with technological and educational advancements. As the state's flagship public medical school, our mission is to continue to elevate the healthcare of Georgians and expose our students to the healthcare inequities which exist in our own backyard. Our uniquely distributed campus model, and revised curriculum offers educational and clinical experiences to fit individual learning styles. To continue to address Georgia's physician shortage, MCG opened a four-year campus located on the Armstrong campus of Georgia Southern University in Savannah. This campus welcomed its first class of 40 students in the fall of 2024 and brought the MCG total entering class size to 304 medical students.

In addition to an innovative pre-clinical medical foundation, MCG students will receive a wide variety of clinical experiences provided by our three main campuses and our three regional clinical campuses located in Savannah/Brunswick, Rome/Dalton and Albany. To supplement these experiences, there are more than 300 clinical training sites across the State of Georgia. These diverse and expansive opportunities ensure our students are exceptionally prepared to meet the challenges of an ever-changing healthcare environment. Our students are engaged within our classes, local communities, state societies and beyond. Additionally, students receive a vast array of support services to ensure individual student success. Regardless of your main campus selection or your chosen field of medicine, the Medical College of Georgia will have you practice ready and ensure your overall success as evidenced by our consistently outstanding annual class match rate performance, which culminated with the Class of 2025 match rate of 99%!

Each year, MCG receives thousands applications from qualified and exceptional students. The mission of the admissions committee is to seat the best possible class of future physicians who fit the mission of MCG and who will meet the growing healthcare needs of our diverse state and beyond. We conduct a holistic review of each candidate and seek students who are not only academically strong, but who demonstrate compassion, resilience, empathy, intellectual curiosity, leadership and a true desire to serve and uphold the highest ethical and moral standards of the medical profession. We strive for equity in our admissions process. Our admissions committee does not conduct interviews and all interviewers are blinded to the applicant's file and all other interview assessments. We expect each and every graduate to serve as a leader in healthcare profession and be an ambassador for both MCG and the approximately 9,000 living alumni.

As a Georgia native and graduate of the Medical College of Georgia for both my medical education and residency training in Obstetrics and Gynecology, I am proud to call the Medical College of Georgia home. It is our hope that you too will find a home at the Medical College of Georgia.

All the best,



Kelli M. Braun, '04, MD, FACOG

Senior Associate Dean for Admissions | Professor, Director of Simulation and Virtual Education, Obstetrics and Gynecology



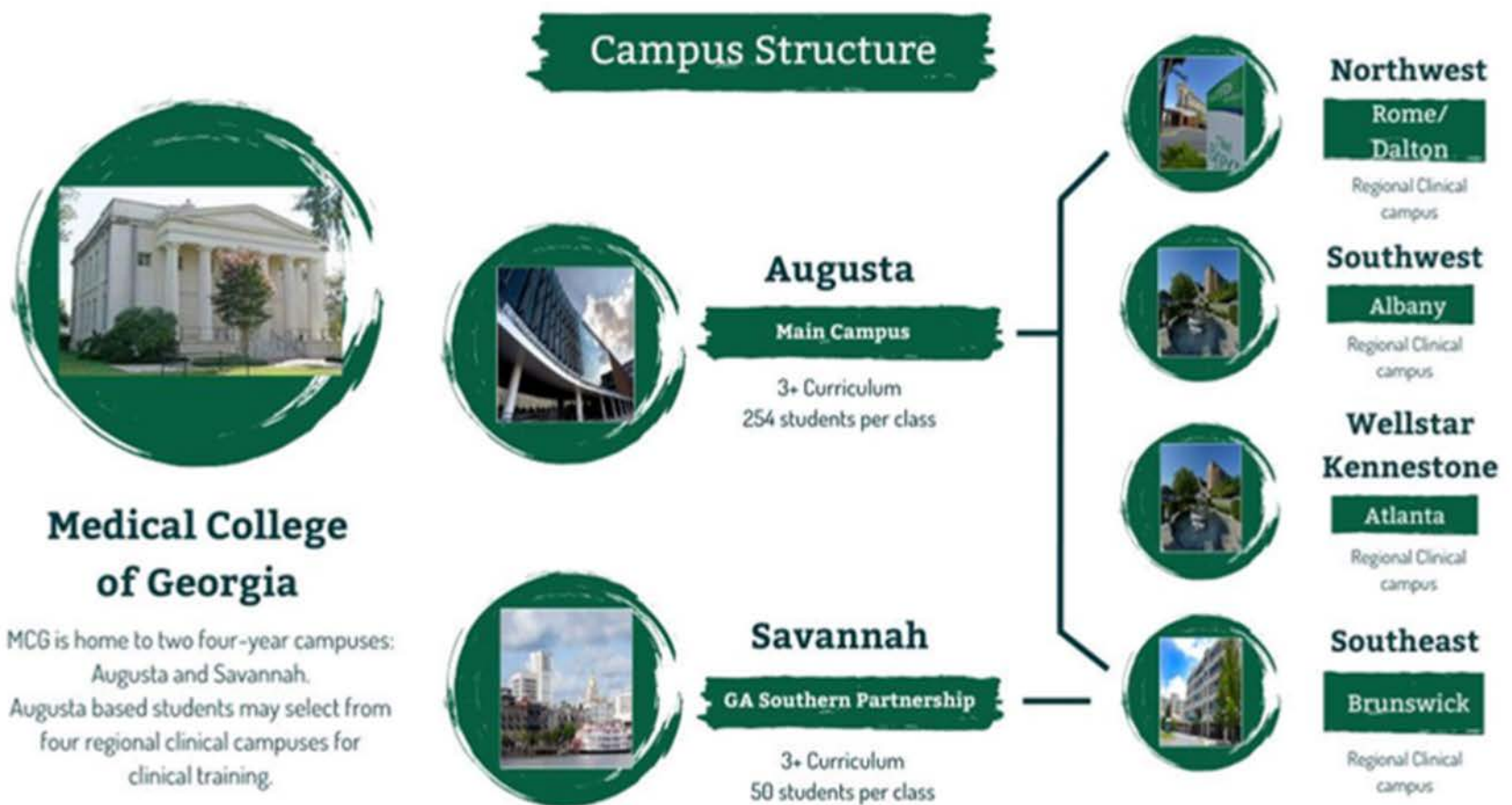
STATEWIDE IMPACT

One MCG

Founded in 1828 as Georgia's flagship public medical school, the Medical College of Georgia (MCG) has a long legacy of training exceptional physicians and physician-scientists. MCG maintains the academic advantage as the only public medical school in the state of Georgia with an academic medical center, Wellstar MCG Health. Wellstar MCG Health is the proud home to 18 clinical and six basic science departments, 51 ACGME-accredited residency training programs and seven research centers/institutes. Our statewide campus network allows students to learn medicine on one of two four-year campuses, located in Augusta and Savannah, as well as four regional clinical campuses including Albany, Brunswick, Rome/Dalton and opening in 2025, Wellstar Kennestone in Atlanta. Addressing the physician shortage and the healthcare needs of Georgians while providing an exceptional medical education is our priority at the Medical College of Georgia.

Our expansive and geographically diverse state is among the top 10 states in the nation for population size and growth; yet, according to the most current State Physician Workforce Profile from the Association of American Medical Colleges (AAMC), the state of Georgia ranks 39th in the number of active physicians per 100,000 population. MCG continues to demonstrate its commitment to our students and improving the healthcare of Georgians. By increasing our medical student class size and expanding partnerships with physicians and hospitals throughout Georgia, we are committed to addressing the physician workforce shortage and ensuring our students are exposed to all aspects of medicine from primary to tertiary care. Georgia is our campus!

ONE MCG, ONE MISSION, MANY CAMPUSES





MCG CURRICULUM

Overview

The Medical College of Georgia is home of the innovative 3+ curriculum which is designed to blend foundational knowledge with clinical experience, preparing students to thrive in a dynamic healthcare landscape. With a focus on innovation, research, and patient-centered care, our program equips students with the tools they need to make a meaningful impact in medicine. MCG students engage in early clinical experiences, beginning in the first weeks of medical school, and develop self-motivated learning through a variety of small and large group activities.

At MCG, students engage in early clinical experiences within the first weeks of medical school and develop self-directed learning through a dynamic mix of small and large group activities.

The 3+ curriculum is structured into three phases:

1. Pre-clerkship (18 months)

–Six modules to build a strong foundation in medical sciences plus career exploration

2. Clerkship (18 months)

–Hands-on patient care experiences in eight core clerkships

3. Enrichment (final year)

–Personalized learning through one of four pathways: advanced residency preparation, research concentration, dual degrees, or the 3+ Primary Care Pathway

PRE-CLERKSHIP ACADEMIC CALENDARS

PRE-CLERKSHIP – FALL 2025 SEMESTER

August 4, 2025	First Day of Class
September 1, 2025	Labor Day
November 26 – 28, 2025	Thanksgiving Vacation
December 19, 2025	Last Day of Classes

PRE-CLERKSHIP – SPRING 2026 SEMESTER

January 5, 2026	First Day of Classes
January 19, 2026	MLK Holiday
April 6 – 10, 2026	Spring Break
May 25, 2026	Memorial Day
June 19, 2026	Juneteenth
June 26, 2026	Last Day of Classes

PRE-CLERKSHIP – FALL 2026 SEMESTER

July 13, 2026	First Day of Classes
September 7, 2026	Labor Day
November 25– 27, 2026	Thanksgiving Vacation
December 18, 2026	Last Day of Classes



Pre-Clerkship Curriculum

During the eighteen-month Pre-clerkship Curriculum students acquire foundational science knowledge along with skills required for clinical decision-making and patient care. The integrated, clinical case-based pre-clerkship curriculum consists of thirteen modules and courses that include large and small group learning, laboratories (anatomy, simulation, ultrasound), and clinical skills sessions that utilize both standardized patient and real patient encounters. Weekly clinical cases are the cornerstone of the curriculum which are used to facilitate learning of foundational basic science content, clinical care, public health and advocacy, professionalism, ethics, cultural competency, evidence-based medicine, and value-based healthcare. At the conclusion of this Pre-clerkship Curriculum, students will be equipped with the necessary knowledge, skills, behaviors, and attitudes to successfully perform in the Clerkship phase of the curriculum. Grading is pass/fail in the Pre-Clerkship Curriculum and passing the USMLE Step-1 is a requirement for promotion to or successful completion of the Clerkship Curriculum. Teaching strategies include interactive small group learning, which includes Case-based learning (CBL), and Patient-Centered Learning (PCL), preceptor relationships (You+ Learning), and Large Group lectures that are linked to course objectives (described below).

Case-Based Learning

Case-based Learning (CBL) provides an opportunity for Pre-clerkship students to work in small groups to discuss real patient cases under the direction of clinical and foundational science educators and learn how to develop broad differential diagnoses, discuss pertinent positive and negative signs and symptoms, and develop a management plan.

Patient-Centered Learning:

Patient-Centered Learning (PCL) is a hands-on, clinical skills longitudinal course that develops students' skills including history-taking, performing a physical exam, and working as a team to manage patients. Hands-on activities include high-fidelity simulations, standardized patient encounters, and workshops, with each week being integrated with CBL module content.

You+ Learning course:

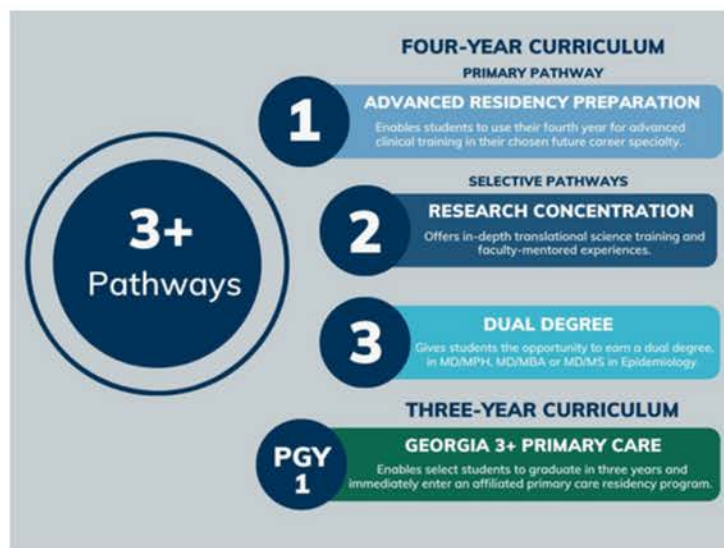
You + learning course is a Pre-clerkship course that is designed to help prepare students for their role as a physician maximizing learning related to professional identity formation. The core pillars of this course are: 1. Ethics, 2. Leadership, and 3. Health, equity, and justice.

Large Group Sessions:

Large group sessions include lectures, team-based learning (TBL), labs, and panels to provide foundational knowledge in preparation for the clerkships.

(+) Enrichment phase:

1. Advanced Residency Preparation (Residency Jump start) pathway offers the option to complete the core curriculum in three years, then utilize the fourth year to participate in career-oriented advanced clinical training and research, through a focus on the skills and competencies essential to their desired residency program. This pathway also offers the opportunity to engage in away elective options.
2. Dual Degree Pathway offers the option to complete the core curriculum in three years, then obtain a dual degree either in business (MBA) or public health (MPH) at Augusta University in their fourth year of study to prepare students for careers in academic medicine. Students interested in this pathway will undergo an application and selection process. Currently the MPH program is online and the MBA program is in person on the Augusta campus.
3. Advanced Research Pathway offers the option of rigorous research with faculty mentor support and guidance. Students will be required to complete a scholarly project in addition to the research project, and must also complete the advanced clerkship phase, and six weeks of electives. Students will be required to present a poster at Research Day in the graduating year and give a final presentation to their mentor, research team, and curriculum faculty.
4. PGY1-Pathway (3+ primary care residency pathway) offers the option for students to enter primary care residencies and become primary care doctors for rural and underserved areas in Georgia at an accelerated pace. The 3+ Primary Care Pathway students graduate in three years and immediately enter a residency in either family medicine, internal medicine, pediatrics, psychiatry, emergency medicine, obstetrics and gynecology or general surgery.





DUAL DEGREES

MD/MBA, MD/MPH, MD/MS in Epidemiology

Augusta University is enhancing the educational opportunities for medical students through the development of dual degree programs and areas of concentration. These educational possibilities expand the academic diversity of our physician graduates who will enter the work force. Students choosing the option of a dual degree program will receive the MD/MBA, MD/MPH, MD/MEd, and MD/MS in Epidemiology degree in the 4th year of study. Applications for Dual Degree programs are available after matriculation into the MD program.

MD/PHD

The University System of Georgia MD/PhD Program trains students in the research and clinical skills that will enable graduates to translate research findings into clinical outcomes.

The synergy created between the outstanding clinical environment of the Medical College of Georgia at Augusta University and an uncommon breadth and depth of nationally ranked PhD programs is what makes this a truly unique educational experience. This seven to eight-year program prepares a diverse group of students who have a passion for medical research and a dedication to serving others for rewarding careers in biomedical research or in academic medicine.

Our highly-personalized program was founded in 1995 and our graduates have become faculty members and are pursuing academic careers at The Mayo Clinic, Emory University, Yale University and the National Institutes of Health. Others are completing residencies or fellowships at Yale University, Stanford University, Emory Healthcare, Johns Hopkins Hospital, Augusta University Health System and other prestigious institutions. Training in our program unlocks doors at the top academic medical centers in the nation.

As a trainee in the MD/PhD program, you will hold the title of J. Harold Harrison Medical Research Scholar, reflecting the endowment of the program by the prominent vascular surgeon and MCG graduate who funded the program with a gift in 2013. This endowment additional fellowships support your entire medical training experience by receiving a monthly stipend, waived tuition, and paid single-student health insurance mitigating most student debt from your medical training.

Unlike many MD/PhD programs, which adhere to a fixed entry schedule, our curriculum offers greater flexibility which allows students to enter at various stages of their medical education, called FLEX entry. Matriculation into the MD/PhD program can occur at any time during the pre-clerkship education and FLEX entrants receive the same stipend and tuition benefits as traditional program entrants.

Another unique aspect of our program is that your options for thesis research are wider than Augusta University. The MD/PhD program partners with any state university in Georgia, opening research like genetics or virology at the University of Georgia or bioengineering and bioinformatics at the Georgia Institute of Technology. The PhD degree awarded will reflect the institution in which it is obtained and maximizes the kind of research you can combine with your medical degree from MCG. During your research training, a monthly stipend, reduced tuition, and single-person health insurance will be available to you as a Graduate Research Assistant.

Taken together, the range and extent of options available in MCG MD/PhD program can place you on any professional path you choose. We look forward to welcoming you on board!





**Approximately
75% of
MCG students
participate
in research.**

RESEARCH

augusta.edu/research

Scientific discovery is the essence of progress in health-related science and the hope in medicine for uncovering the unknown to identify treatments and cures to human disease. Medical student scholarship at the Medical College of Georgia offers the opportunity for all medical students in good academic standing to become engaged in a scholarly project, in close mentorship with faculty who are nationally and internationally distinguished scientists, clinicians, and academic scholars. An array of scholarship opportunities is available, including basic and biomedical laboratory research, clinical and translational research, community/ global health research, and medical education research. Students typically engage a research effort at Augusta University or the University of Georgia, although efforts at outside institutions is possible – for example, students have completed research internships at Emory University, the National Institutes of Health, Duke University, Boston Children's Hospital and Memorial Sloan Kettering Cancer Center, among many others. Held each academic year, the Medical College of Georgia's Medical Scholars Research Day offers the occasion for students to present their research/scholarship findings to fellow students, faculty, and colleagues. MCG currently has ~\$186 million in total grants and contracts of which nearly \$57 million in funding received from the National Institutes of Health. Currently, six Georgia Research Alliance Eminent Scholars are leading extraordinary research and development programs at the Medical College of Georgia.

Clerkships & Clinical Enrichment

Clerkships

Patient contact begins pre-clerkship. Clerkships consists of required core clerkships in:

- Emergency Medicine
- Internal Medicine
- Family Medicine
- Neurology
- Obstetrics/Gynecology
- Pediatrics
- Psychiatry
- Surgery

*Full course schedule subject to change. For more information visit augusta.edu/curriculum

Clinical Enrichment

Students also participate in a series of clinical enrichment activities in:

- Critical Care
- Adult Ambulatory Medicine
- An Acting Internship
- Elective Study

MainCampus – Augusta

Core clerkships take place at the AU Health System, the Children's Hospital of Georgia, the regional campuses, and various affiliated hospitals and community-based teaching sites throughout the state. Students may rotate to affiliated community hospitals for part of the core curriculum.

In the clerkship enrichment phase, students must complete four-week rotations in emergency medicine, critical care, adult ambulatory medicine, and an acting internship in either family medicine, neurology, medicine, pediatrics, surgery, or obstetrics and gynecology. Elective study can include both clinical and research courses. In addition to passing USMLE Step 2 CK and CS, students must complete a total of four, four-week electives to fulfill the requirements for graduation.



REGIONAL CLINICAL CAMPUSES

Southwest Campus

augusta.edu/mcg/expansion/southwest

The MCG Southwest Campus Suite is conveniently located at 1000 North Jefferson Street, Albany, GA, directly across the street from Phoebe Putney Memorial Hospital. The space includes offices for the campus administration and staff, student study stations, as well as a conference room and classroom for video conference links to Augusta and around the state. The UGA College of Pharmacy shares space in this education center, offering students an opportunity for formal and informal interprofessional growth. MCG students have free access to Phoebe's state-of-the-art health and fitness center, HealthWorks, also located in the same building.

Phoebe Putney Memorial Hospital in Albany, Ga. is the main hub for clinical sites for the Southwest Campus. Established in 1911, Phoebe Putney is a 691-bed tertiary referral medical center that serves almost 400,000 people from southwest Georgia. More than 300 affiliated doctors and 4,000 staff at Phoebe Putney deliver world-class healing and prevention to the southwest region of the state. Phoebe Health System has grown to include hospitals in Americus, Sylvester, and Cuthbert.

Phoebe Family Medicine Residency serves as the backbone for primary care clinical experience in Albany.

Southwest Campus hospital partners include:

- Coffee Regional Medical Center, Douglas
- Colquitt Regional Medical Center, Moultrie
- Crisp Regional Hospital, Cordele
- Greenleaf Center, Valdosta
- Greenleaf Hospital, Valdosta
- John D. Archbold Memorial Hospital, Thomasville
- Memorial Hospital and Manor, Bainbridge
- Miller County Hospital, Colquitt
- Phoebe Putney Memorial Hospital, Albany
- Phoebe Sumter Medical Center, Americus
- Piedmont Columbus Regional Hospital, Columbus
- Roosevelt Warm Springs Rehabilitation & Specialty Hospitals, Warm Springs
- South Georgia Medical Center, Valdosta
- St. Francis Hospital, Columbus
- Tift Regional Medical Center, Tifton
- West Georgia Medical Center, LaGrange

Clinical Rotations

The Southwest Campus offers a comprehensive catalogue of three- to six-week clinical clerkships, based at one of the hospital partners or at private practices of clinical faculty.

Unique to the Southwest Campus, students here can elect to follow the traditional clerkship model—a series of 3 or 6 week clerkships—or the innovative Longitudinal Integrated Clerkship (LIC).

The SW LIC offers:

- integration of neuro and psych across 6 weeks,
- 3 week “sessions” of the Surgery, Internal Medicine, OBGYN, and Pediatrics clerkships (first half and second half of clerkship year)
- Weekly Family Medicine clinic for a longitudinal exposure to a primary care experience that helps to integrate all the clerkship disciplines.
- 2 week Health Policy Elective at the beginning of the clerkship year, offering students a practical experience at communicating policy positions effectively as well as an immersion opportunity to the SW Georgia community.

With the addition of 12 weeks of elective time to the clerkship experience, Southwest Campus students have first choice from an amazing menu of opportunities to expand their clinical experience—from specialty rotations, to health policy studies, to basic science or clinical research.

Also unique to the SW Campus, students are afforded the opportunity to participate in the AHEC Scholars Program, a two-year interprofessional development experience shared with UGA Pharmacy students, medical students from PCOM South, along with nursing students from Georgia Southwestern University and Albany State University.

Clinical Rotation offerings on the SW Campus include:

- Anesthesiology
- Cardiology
- Cardiothoracic Surgery
- Critical Care (Adult and Neonatal)
- Critical Care (IPE with UGA Pharmacy Faculty)
- Dermatology
- Emergency Medicine
- Family Medicine
- General Surgery
- Hematology/Oncology
- Internal Medicine
- Neurology
- Neurosurgery
- Obstetrics and Gynecology
- Orthopedics
- Otolaryngology
- Palliative Care
- Pediatrics
- Psychiatry
- Pulmonology
- Radiation Oncology
- Radiology
- Sports Medicine
- Surgical Oncology
- Urology

Flaggstone at Phoebe

Completed in Spring 2017, these beautiful and modern apartment homes for healthcare professionals-in-training feature 40 beds and 26 apartments (a mixture of studio, one bedroom, two bedroom, and three bedroom units). Tenants arrive to a gated and beautifully landscaped property and will first notice the outdoor grill, dining and seating area complete with an outdoor fireplace. Inside the common area, you'll find a large-screen television, two private study/conference rooms and additional dining space. Each apartment is furnished with a queen bedroom set, stainless kitchen appliances, an in-room washer and dryer and living room furniture as well as a television in each living room, cable hook up in each bedroom and wireless internet throughout the building. Apartments feature a spacious closet, plenty of natural light and unique architectural touches. Flaggstone is located just one block from the Phoebe Putney Memorial Hospital main campus and is across the street from the MCG Southwest Campus offices as well as HealthWorks – the Phoebe fitness center. Tenants at Flaggstone will feel safe and right at home in this gorgeous new facility – designed especially for the next generation of healthcare professionals.

The Community

Located on the banks of the Flint River, Albany-- dubbed "The Good Life City"-- has something for everyone. With a population of approximately 100,000, Albany is enjoying an emerging downtown revival, serving up an abundance of outdoor activities and cultural offerings including:

- Riverquarium
- Parks at Chohaw
- Providence Canyon, part of Georgia State Parks
- Kayaking the Flint River Shoals
- Hiking, biking, and running trails
- Jimmy Carter National Historic Site (Plains, GA)
- Albany Museum of Art
- Albany Civil Rights Institute
- Albany Symphony
- Theatre Albany

MCG students on the Southwest Campus can strike a healthy balance between their very busy clinical experiences and the relaxing environment provided in communities where traffic jams do not exist and healthy distractions are everywhere. Most importantly MCG students experience "real world" medicine as it is delivered by the army of volunteer physician educators who practice in small and rural communities across Southwest Georgia.

Southeast Campus

augusta.edu/mcg/expansion/southeast

The Southeast Campus is comprised of 9 hospital systems.

- St. Joseph's/Candler Health System, Savannah
- Southeast Georgia Health System, Brunswick
- Memorial Health System, Savannah
- Southeast Georgia Health System, St. Mary's
- East Georgia Regional Medical Center, Statesboro
- Winn Army Medical Center, Ft. Stewart
- Meadows Regional Medical Center, Vidalia
- Mayo/Satilla Medical Center, Waycross
- Warner Robins Air Force Base Health Center, Warner Robins

Clinical Rotations

St. Joseph's/Candler Health System in Savannah and Southeast Georgia Health System in Brunswick serve as administrative sites where MCG students can acquire extensive hands-on experience during rotations in:

- Emergency Medicine
- Family Medicine
- Internal Medicine
- Obstetrics and Gynecology
- Orthopedics
- Pediatrics Neurology
- Psychiatry
- Surgery

St. Joseph's/Candler Health System in Savannah provides an administrative hub for the Assistant Dean for Curriculum and the Clinical Rotation Coordinator so that students can receive additional academic support while completing their clinical rotations in the area.

The East Georgia Regional Medical Center in Statesboro has clinical rotations for students in obstetrics and gynecology and internal medicine/ ambulatory care. Additional clinical rotations in Family Medicine are available in Waycross, Blackshear, and Jesup.

The Community

Savannah, Brunswick, Statesboro and the surrounding rural communities that comprise the 35-county region of the Southeast Campus offer a variety of opportunities for students completing their clinical rotations in their third and fourth years of medical school. The communities are historically rich, environmentally engaged and student-friendly. Each of the hospitals support student training by offering housing in each of the communities at no cost to the students in order to minimize the financial burdens and enrich the learning experiences. Students are frequently invited to join their clinical preceptors in community functions, medical staff meetings, and professional development training. Beaches and state parks are abundant in southeast Georgia. St. Simon's Island and Jekyll Island are within minutes of Southeast Georgia Health System in Brunswick and offer public access to the beaches for swimming, biking, kayaking, and sailing as well as learning more about marine life.

Northwest Campus

The northwest campus is based in Rome and Dalton, Georgia. With ten students living in the Rome area, and another six living and working in the Dalton area, the NW Campus offers a Longitudinal Integrated Clerkship experience. This means students work alongside physicians in Family Medicine, Internal Medicine, Pediatrics, Psychiatry, and Neurology all year long, with more intensive immersions in Surgery and OB/GYN. The resultant schedule allows students to follow patients during their year of clinical experience, including throughout phases of comprehensive cancer treatment and pregnancy.

With access to the largest per capita population of physicians in the state, the campus emphasizes interprofessional learning and a technologically advanced team approach to health care.

The Northwest Campus office is situated in the historic James D. Maddox Heritage Hall building of Georgia Highlands College. For ambulatory patient visits, students work in private physician offices, as well as the Harbin Clinic, the largest physician-owned multispecialty practice in Georgia.

Inpatient teaching is centrally located between two proximal hospitals in Rome: AdventHealth Redmond and Atrium Health Floyd. Redmond is a 230-bed acute care facility with 28 ICU and 12 CCU beds and is the provider of cardiothoracic surgery in northwest Georgia. Redmond has Internal Medicine and Transitional Year residents with whom students work. Floyd is a private, not-for-profit 304-bed with a Level III NICU and Level II Trauma Center that sponsors one of the first established Family Medicine residencies in the state.

In the Dalton area students work with physicians at the Hamilton Health Care System. Hamilton Medical Center is a 282-bed regional acute care hospital that offers all services including open heart surgery. Hamilton also sponsors residencies in Internal Medicine and Family Medicine. Hamilton also has the only comprehensive pediatric institute in the state that focuses on developmental delays and behavioral issues. The Anna Shaw Children's Institute is part of the student's pediatric clinical experience.

The Community

The northwest Georgia community includes the urban areas of Rome, Dalton, Cartersville and Calhoun as well as the more rural communities of Cedartown, Adairsville and Armuchee. These sites are only a short drive from downtown Rome. Rome is home to four colleges: Berry College, Georgia Highlands, Shorter College, and Georgia Northwestern Technical College. As home to minor league baseball team, Rome Braves (owned by the Atlanta Braves), NCAA football, the oldest symphony in the state, and an international film festival, Rome boasts a vibrant social, arts, and recreation scene.

augusta.edu/mcg/expansion/northwest





PROFESSIONAL SCHOLARS PROGRAM

General Information

The mission of the Augusta University/Medical College of Georgia Professional Scholars program is to optimally prepare students for a career in medicine. This is an accelerated program where students complete coursework for their BS degree in three years and requirements for the MD degree in four years. Students accepted into the selective Professional Scholars program will pursue a pathway for baccalaureate study in the College of Science and Mathematics with a BS in Cell and Molecular Biology through the Department of Biological Sciences. Through mentoring, early clinical and research exposure, as well as personal and professional enrichment experiences, the comprehensive curriculum provides students with a solid and unique undergraduate foundation and prepares them to emerge from the Medical College of Georgia as leaders in the field of medicine. Eligible freshmen who are admitted to AU and desire to pursue medical education will have assured admission to the Medical College of Georgia provided they meet, and continue to meet, all the requirements of the program.

Academic Admissions
706-737-1632
augusta.edu/admissions/professionalscholars.php

Minimum Requirements

- High School GPA of 3.7 or above
- SAT score of 1460 (Evidence-Based Reading and Writing and Math sections) or ACT Composite score of 32
- Supplemental Application One Letter of Recommendation

Continued Requirements

Additional requirements of students in the BS/ MD program include successful completion of an interview following the third year of study, maintaining a cumulative and science + math GPA of 3.6, 3.6, and 3.7 at the end of the first, second, and third year respectively, completing 75 hours of clinical service in a medical facility by October 31st of the third year, complete 50 volunteer/leadership hours and achieving a minimum score of no less than the prior year's national mean for medical school matriculants on the MCAT. The MCAT must be taken no later than September 30th of the third year. Due to the nature of the curriculum all courses are to be taken during the fall and spring semesters of the academic year. Students enrolled in the Professional Scholars program do not have the option to take courses out of sequence, repeat courses, or take courses at another institution during the summer.

Please note requirements are subject to change.

For updated requirements, please visit: augusta.edu/admissions.

STUDENT SUPPORT

Office of Student Affairs

augusta.edu/mcg/students/aboutus

Augusta

The Office of Student Affairs touches the life of every medical student from recruitment to graduation and beyond. Its mission includes building community by offering a strong infrastructure of innovative student services, programs, and resources. The Office of Student Affairs seeks to assist each student in achieving his/her highest potential and provides education, counsel, and advice to transform a diverse group of students into culturally competent, empathic, patient-centered, and ethical physicians. The office oversees the progress of students throughout their medical school years, informed by policies of the university, the Liaison Committee for Medical Education and the Association of American Medical Colleges. The office includes the Associate Dean for Student Affairs, a Dean for each phase of the curriculum, Assistant Dean for Academic Advising, an Assistant Dean for Career Advising, an Associate and Assistant Dean for Belonging and Inclusivity, an Associate Dean for Student Well-being, and administrative personnel. The office is committed to:

- Fostering an inclusive and student-centered community
- Advocating for student needs, both individually and collectively
- Respecting the individuality of each student
- Listening to student concerns and partnering to find solutions
- Being available, accessible, and responsive
- Being accurate and current with programming and advising
- Being transparent and fair about policies and expectations of students
- Protecting confidentiality

Class Deans

At the Medical College of Georgia, there is a Student Affairs Dean responsible for each phase of the curriculum. We have a matriculating dean who ushers students through the first semester of medical school; a dean responsible for students during the remainder of the pre-clerkship curriculum; a clerkship year dean; and a dean for the enrichment phase. Each dean is well-versed in the specific needs of his or her part of the curriculum, and the open communication among deans allows for seamless transition for students from one phase to the next.

Academic Advising

Students are assigned a longitudinal Academic Advisor who supports each student's academic needs from matriculation to graduation. Students meet with their academic advisor quarterly for the first 18 months and then once every semester until graduation. It is our goal to meet students where they are, thus, we also offer one-on-one, small group, and large group study skills sessions with a trained learning specialist. Peer and near peer tutoring services are available for all students.

Career Advising

Students are assigned a longitudinal Career Advisor at the time of matriculation to medical school based on Learning Community assignment, and their advisor supports them through the steps of choosing a career. Our advisors are diverse, represent a wide range of specialties, and provide individualized attention to the students' needs. Through a series of one-on-one meetings during the first 2 years of the curriculum they help guide students through the self-exploration necessary to choosing a satisfying specialty, ensure students know about all career options so they can make a well-informed decision, and coach students to resources necessary to be successful. Students may request continued meetings even after a subspecialty has been declared and a subspecialty career advisor has been identified. The career advising program also offers participation in AAMC Careers in Medicine program, quarterly virtual career panels, ways to engage in and track completion of career exploration activities in medical, surgical, and ancillary specialties, and completion of a curriculum vitae.

Student Well-Being

The Office of Student Well-being serves students across the UME/GME continuum. Our services are designed to meet the needs of medical students, residents, and fellows. We are committed to enhancing patient care and welfare and believe that optimal care requires an environment where all learners and healthcare providers can thrive, feel support and well treated. Support services for emotional, physical, spiritual, and financial well-being are provided. MCG takes student wellness very seriously and requires students to complete wellness activities each semester. Additionally, the Office of Student Well-being provides monthly well-being events for students which are planned in concert with the Vice Presidents for Wellness on each class's executive board.



TRADITIONS & EVENTS

Visit Day

Visit Day is an opportunity to introduce accepted applicants to Georgia's flagship public medical school. Student and faculty representatives from all of MCG's campuses attend to provide information on MCG's curriculum, student-run clinics, organizations, and more.

White Coat Ceremony

The White Coat Ceremony welcomes entering medical students and helps establish a psychological contract for the practice of medicine. The event, emphasizing compassionate patient care and scientific proficiency, includes the recitation of an Oath of Service and Responsibility representing public acknowledgment of the responsibilities of the profession and students' willingness to assume such obligations in the presence of family, friends, and faculty and cloaking of students in their first white coats.

At the ceremony, students are welcomed by their deans and other institutional leaders who represent the value system of the school and the new profession the students are about to enter. The cloaking with the white coat – the mantle of the medical profession – is a hands-on experience that underscores the bonding process. The coat is placed on each student's shoulders by individuals who believe in the student's ability to carry on the noble tradition of doctoring. It is a personally delivered gift of faith, confidence, and compassion.

Hooding

This annual rite formally acknowledges the medical students' achievement by administering the Hippocratic Oath and presenting the academic hood, which students wear during their Commencement Ceremony.

Match Day

The Match is the annual process where fourth-year medical students are matched through the National Resident Matching Program (NRMP) to residency programs across the nation.

In 2023, 99% of MCG's graduates matched in a residency position, exceeding the national average.

- Primary Care: 134
- Internal Medicine: 31
- Pediatrics: 28
- Family Medicine: 26
- General Surgery: 13
- Emergency Medicine: 12
- OB/GYN: 10
- Internal Medicine/Pediatrics: 2
- Pediatrics/Psych/Child Psychology: 1

Annual Raft Debate

MCG faculty members play their roles and make their case for survival based on their contributions to society. This insight helps teach sophomore and junior medical students the pros and cons of different medical specialties. Students leave the debate not only with a better understanding of the specialties but with a keener sense of direction. The evening includes a low-country boil and time for students to mingle with faculty and alumni. This event is sponsored by the Medical College of Georgia Alumni Association.

MCG's Got Talent

An annual show where students and faculty are invited to display their talents, including visual arts. The show's mission is to raise money to support local charities and showcase the outstanding talent of faculty and students.



STUDENT OPPORTUNITIES

A wide array of student organizations and campus activities provide students on the Augusta campus with the opportunity to find their niche and become an integral part of the MCG and AU families and the Augusta community.

Student-Run Clinics include:

- Asian Clinic
- Augusta Free Dermatology Clinic
- Clinica Latina
- Compass Clinic
- Druid Park Student Clinic
- Empower Clinic
- Equality Clinic
- Faithcare Clinic
- Free Mental Health Clinic
- Halo Clinic
- MSK Clinic
- Pediatric Clinic
- Shifa CareClinic
- Vision Clinic
- Women's Clinic

Community & Service

- Mentoring Programs
- Junior Medical League
- Boys and Girls Club
- Health Equity & Access Leaders Program
- International Medical Mission Trips
- Student Government
- Class Liaisons
- National Medical Student Organizations
- Curriculum Oversight Committee
- Admissions Committee
- Admissions Ambassador
- Admissions MMI Interviewer
- Intramural Sports
- Ultrasound Competition

Global Opportunities

The Medical College of Georgia has a variety of global health opportunities available throughout your medical career. Under the direction of Global Health Director Dr. Daniel Kaminstein students can engage in educational opportunities both on and off campus. These include a student-led Global Health Interest Group, the global health Area of Concentration, global health electives, and study abroad opportunities during the first year and fourth year. Students can participate in individually directed global health opportunities or join in faculty-led trips.

You may visit augusta.edu/studyabroad for more information.

RESIDENCY & FELLOWSHIP PROGRAMS

ANESTHESIOLOGY

ANESTHESIOLOGY AND PERIOPERATIVE MEDICINE

Anesthesiology Residency
Pain Medicine Fellowship
Anesthesiology Critical Care Fellowship
Pediatric Anesthesiology Fellowship

DERMATOLOGY

Dermatology Residency

EMERGENCY MEDICINE

Emergency Medicine Residency
Emergency Medical Services Fellowship
Pediatric Emergency Medicine Fellowship

FAMILY MEDICINE

Family Medicine Residency
Family Medicine Residency/Satilla Rural Program

MEDICINE

Cardiology Fellowship
Clinical Cardiac Electrophysiology Fellowship
Endocrinology Fellowship
Gastroenterology Fellowship
Hematology Oncology Fellowship
Infectious Diseases Fellowship
Interventional Cardiology Fellowship
Internal Medicine Residency
Nephrology Fellowship
Pulmonary Critical Care Fellowship
Rheumatology Fellowship

NEUROLOGY

Child Neurology Residency
Clinical Neurophysiology Fellowship
Neurology Residency
Vascular Neurology Fellowship

NEUROSURGERY

Neurosurgery Residency

OBSTETRICS & GYNECOLOGY

OBGYN Residency
Gynecological Oncology Fellowship
Reproductive Endocrinology and Infertility Fellowship

OPHTHALMOLOGY

Ophthalmology Residency

ORTHOPEDICS

Orthopedic Surgery Residency

OTOLARYNGOLOGY

Otolaryngology Residency

PATHOLOGY

Forensic Pathology Fellowship
Anatomic and Clinical Pathology Residency
Blood-Banking/Transfusion Medicine Fellowship

PEDIATRICS

Allergy/Immunology Fellowship
Pediatric Residency
Pediatric Cardiology Fellowship
Pediatrics Critical Care Medicine Fellowship
Neonatal-Perinatal Medicine Fellowship

PSYCHIATRY

Addiction Medicine Fellowship
Psychiatry Residency
Child and Adolescent Psychiatry Fellowship
Forensic Psychiatry Fellowship

RADIOLOGY

Diagnostic Radiology Residency
Interventional Radiology Integrated Residency
Neuroradiology Fellowship

SURGERY

Surgery Residency
Surgical Critical Care Fellowship

UROLOGY

Urology Residency

MCG and the AU Health System have 527 residents and fellows training in 51 ACGME approved residency training programs. 25% of MCG seniors will stay in Georgia for their first post-graduate year, 14% at an AU Health/MCG or MCG affiliated residency program, including the Medical Partnership programs in Athens and WellStar/Kennestone in Atlanta.



STUDENT LIFE AUGUSTA CAMPUS

The City of Augusta

Augusta's location along the Savannah River and balmy climate offer amazing opportunities for outdoor activities including sailing, fishing, tennis, and hiking. The Augusta Canal and North Augusta Greenway feature walking and biking trails that offer miles of scenic exercise, recreation, and relaxation. The nearby Lake Thurmond Reservoir is a popular site for waterskiing, swimming, boating, and camping. And did we mention golf? Augusta is world-renowned as the home of the Masters Tournament. A wide array of cultural and recreational events includes First Fridays in downtown Augusta, the Westabou Festival, and Arts in the Heart of Augusta. A major mall, several large shopping centers, and hundreds of restaurants offer many options for shopping and dining. Augusta is located within an easy three-hour drive of Atlanta, Charlotte, NC, the mountains, and the Atlantic Ocean, allowing for great weekend getaways.

Campus Amenities

In addition to activities and events in the greater Augusta area, MCG students have access to a wide range of on-campus amenities. The Student Center houses the Wellness Center – an indoor fitness center with personal training, intramural sports and group exercise classes – as well as the bookstore, Student Government Association Office and The Atrium Food Court. MCG students also have access to the many recreational facilities on AU's nearby Summerville Campus. All students have access to the Jaguar Express Transit System including passage on the City of Augusta transit busses. PassioGo, the AU transit app, allows students to view routes and track the Jaguar Express Transit busses. Jaguar Express | 706-721-2953 | augusta.edu/parking

The Greeblatt Library

The Greenblatt Library maintains current journal subscriptions, electronic resources, online books, and provides access to many external databases. The library provides a mobile application for catalog and database searching, building access hours, as well as the full library website. Audiovisual learning aids are used in class and are available in the library. Grading is pass/fail in the first year. In years two through four, grading is A-F with a C constituting a passing grade. Passing the USMLE Step 1 is a requirement for promotion to the clerkship curriculum.

On-Campus Housing

The Office of Residence Life strives to create a positive residential community that supports the academic mission of the university. Residence Life provides programs, services and a diverse community environment that contributes to individual learning outside the classroom, fosters growth and development and encourages respect and responsible behavior. Residence Life manages on-campus housing for approximately 750 students. For the student who lives on campus, there are a variety of living options for both single occupancy rooms and community apartment living. Students accepted for admission receive access to an online housing application.

JaguarExpress

706-721-2953

augusta.edu/parking

Office of Residence Life

706-721-3471

augusta.edu/housing



STUDENT LIFE SAVANNAH CAMPUS

The City of Savannah

As a resident of Savannah, students will become part of a community that values its history and traditions while embracing progress and innovation. Our city's commitment to historic preservation ensures that the architectural treasures of the past continue to enrich the fabric of our daily lives, while forward-thinking initiatives in sustainability, education, and economic development pave the way for a bright future for generations to come. Along the coast, students can enjoy a day studying at a riverside café, vibrant nightlife downtown, or a relaxing afternoon at the beach. Whether you're drawn to Savannah by its rich history, its vibrant culture, or its warm and welcoming atmosphere, one thing is certain: once you experience life in our beloved city, you'll understand why Savannah truly is a place like no other.

Campus Amenities

Our partnership with Georgia Southern provides students access to a large variety of on-campus amenities. The recreation center houses a variety of opportunities for indoor fitness, including club sports, fitness classes, and personal training. In addition, students can access a range of dining options on campus including Chik-fil-A and Starbucks. Students on the Armstrong campus have access to study and recreation spaces, including a state-of-the-art student study space equipped with both individual and group study rooms, games, and much more!

Library & Study Space

Students at MCG Savannah have their own dedicated medical librarian available to help assist in research projects or for study resources. The Lane Library at GSU provides a welcoming environment for students to study, browse books, or to find the latest edition of a medical journal. In addition, students have full access to MCG electronic databases and journals that will help support their goals inside the classroom and at the bedside.

Student Support

Office of Student Affairs - All faculty at MCG Savannah are dedicated to ensuring students have the tools they need to be successful in medical school. The Office of Student Affairs provides services to support learning and professional development across the curriculum, from orientation to graduation. Our office has dedicated resources for student support, academic advising, career advising, and study strategies for students on the Savannah Campus.

Academic Houses

Students accepted to the Savannah campus are assigned to one of four academic houses, named after the islands that border our coastal campus. These houses provide peer-based support throughout medical school, allowing students to build community and connection. These groups meet monthly to provide opportunities for students to share a meal, engage in fun activities, and develop the close bonds that make the Savannah Campus so unique.

On-Campus Housing

On-campus housing is available to all students enrolled at MCG Savannah. University Crossings supports graduate students in apartment-style accommodations in a number of configurations, including one and two-bedroom units. University Crossings is conveniently located on campus within walking distance of all preclinical teaching sites.

GSU Housing

georgiasouthern.edu/auxiliary/housing/halls/universitycrossings/



Apply for admission online through the
American Medical College Application
Service (AMCAS)
aamc.org

APPLYING TO MCG

The Medical College of Georgia's 2024 incoming class of 304 students was selected from 3,244 applications. Admission is competitive and the decision of the admissions committee is final. The admissions committee conducts a holistic review of qualified applicants to admit a diverse class of medical students who will meet the mission of MCG, Augusta University and beyond. In addition to academic readiness, the admission committee considers individual experiences and attributes which include but are not limited to: clinical exposure, service, resilience, empathy, leadership and commitment to medicine. Legacy status does not affect interview or admission decisions. All applicants applying through the Early Decision or Regular Decision program will complete one application through the American Medical College Applications Service (AMCAS). Preference is given to Georgia residents and applicants with a baccalaureate degree from a regionally accredited* college prior to entering the Medical College of Georgia. The minimum requirement is 90 semester hours or 135 quarter hours. A limited number of highly competitive, non-degree applicants may be accepted each year. The non-degree college curriculum must be acceptable as the equivalent of the first three years leading to a bachelor's degree from a regionally accredited* college or university. Applicants enrolled in a graduate degree program must complete all requirements of their graduate degree prior to matriculation. Students wishing to withdraw from a graduate course/program must receive prior approval from the Senior Associate Dean for Admissions. Withdrawal requests are granted on a case-by-case basis.

*Accredited by the appropriate regional agency for colleges and schools, i.e., the equivalent of the Southern Association of Colleges and Schools.

Georgia Residency

As the state's only public medical school, preference is given to Georgia residents. Applicants offered admission as a Georgia resident are expected to maintain Georgia residency status in AMCAS records. Applicants who claim Georgia residency must make a claim on the AMCAS application no later than November 1. No residency changes are permitted after that date. Georgia residents who change their legal state of residence designation with AMCAS after being accepted will have their acceptance administratively withdrawn and their applications reviewed for admission as a non-resident of Georgia. Applicants may only be classified as residents of one state.

International Applicants

In order to be offered an interview, you must be either a U.S. citizen or a permanent resident of the U.S. with a valid, Permanent Resident Card. International applicants, as well as U.S. citizens, must have completed at least the last two years of their undergraduate or graduate education in a regionally accredited* U.S. or Canadian institution. All non-U.S. coursework must be evaluated by Josef A. Silny & Associates or World Education Services (WES), companies that offer foreign credential evaluation and translation. You should have a university and post-secondary course-by-course evaluation completed and sent directly from the Silny or WES office to the MCG Office of Admissions for review. For more information, including cost and evaluation timeline, please visit jsilny.org or wes.org. *Accredited by the appropriate regional agency for colleges and schools, i.e., the equivalent of the Southern Association of Colleges and Schools. Check out the Council for Higher Education Accreditation for more information.

TWO PATHWAYS FOR ADMISSION

Early Decision Program

The Early Decision Program (EDP) at the Medical College of Georgia is only for Georgia residents. EDP applicants may not apply to any other institution until an admission action is made by MCG. Applicants applying through Early Decision will be notified of an admission action no later than October 1st. While not guaranteed, every effort is made to notify applicants of an Early Decision admission action in early September so that applicants may apply to other institutions if not accepted by MCG. Early Decision applicants must submit their AMCAS applications between May 28th and August 1st. All application materials, including official transcripts from all U.S. and Canadian postsecondary institutions attended must be received through AMCAS by August 1st to be considered for Early Decision. Transcripts must be submitted to AMCAS directly from the college's/ university's Registrar's office.

The MCG secondary application and all supplemental documents such as: proof of lawful presence in the U.S., required course information, Georgia residency documentation, and other specifically requested information, must be submitted one week after the secondary application is received. All required documents must be submitted by the final file deadline of August 15th.

Applicants for the Early Decision Program must have:

- MCAT score of 509 and above
AND
- Total GPA of 3.65 or higher

Exam Deadlines

Applicants applying for Early Decision must have a valid MCAT score.

- The last MCAT exam date for Early Decision applicants is: June 28, 2025.

EARLY DECISION TIMELINE



Regular Decision Program

The Regular Decision Program (RDP) at the Medical College of Georgia is open to both Georgia and non-Georgia residents. RDP applicants must submit their AMCAS applications between May 28th and November 1st. Applicants must list the Medical College of Georgia at Augusta University on the AMCAS application by the November 1st deadline and official transcripts, from all U.S. and Canadian postsecondary institutions attended, must be received through AMCAS by November 15th. Transcripts must be submitted to AMCAS directly from the college's/university's registrar's office. All MCG-specific supplemental documents, such as the secondary application, proof of lawful presence in the U.S., Georgia residency documentation, required course information and other specifically requested documents, must be submitted two weeks after the secondary application is received. All required documents must be submitted by the final file deadline of December 1st. Applications received after the final file deadline of December 1st will not be considered for admission.

Exam Deadlines Applicants applying for Regular Decision must have a valid MCAT score.

- The last MCAT exam date for Regular Decision applicants is: September 13, 2025.

REGULAR DECISION TIMELINE





APPLICATION REQUIREMENTS

Primary & Secondary Applications

MCG participates in the American Medical College Application Service (AMCAS), a centralized application service administered by the AAMC Association of American Medical Colleges. Applications for the Medical College of Georgia's Class of 2030 officially open through AMCAS on Monday, May 1, 2025, and submission begins on May 28, 2025. Applications will be processed in the AMCAS office and then forwarded to the medical school(s) of the applicant's choice. Upon receipt of the student's application from AMCAS, MCG will forward an application supplement (secondary application) to the applicants approved for further consideration. MCG does not charge an additional application fee in addition to the AMCAS fee. Students applying through MCG's Early Decision Program must return their secondary application within one week of receipt. Students applying through the Regular Decision Program must submit their secondary application within two weeks of receipt.

PREREQUISITE COURSES

2025-2026 REQUIREMENTS	RECOMMENDED FOR 2025-2026 CYCLE
BIOLOGY One academic year of Biology with lab in college	ANATOMY CELL BIOLOGY MOLECULAR BIOLOGY IMMUNOLOGY MICROBIOLOGY GENETICS PHYSIOLOGY
CHEMISTRY One academic year of Chemistry during college. One semester must be Organic Chemistry and one semester must be Biochemistry.	
PHYSICS One academic year of physics with 2 semesters of lab. AP credit may be used to place out of this requirement	
ENGLISH One academic year of English. English, English-based Composition, Writing, Literature, or Communication are acceptable; Humanities courses may be used to meet one semester of this requirement. AP credit may be used to place out of this requirement.	PSYCHOLOGY BEHAVIORAL SCIENCE SOCIAL SCIENCE HUMANITIES
STATISTICS One semester of probability, statistics, biostatistics or equivalent. One semester of Probability, Statistics, Biostatistics, or equivalent. Statistics, Probability or Biostatistics courses that have a STAT or MATH course number will automatically meet this requirement. Other courses that have a different prefix must be approved as equivalent by the undergraduate institution where the course was taken through the Pre-Med or Pre-Health advisor. If such an advisor is not available, the approval may be granted by any Math or Science chair at the institution. AP credit may be used to place out of this requirement.	

Important Notes:

- One academic year is equal to two semesters, three quarters, or one semester and two quarters.
- Advanced Placement (AP) credits, as outlined above, may be used for non-biology and non-chemistry courses, if they are accepted by the college/university that the applicant attended, and the credits appear on the official transcript.
- Online coursework is acceptable from a regionally accredited institution. It must appear on the official transcript.
- Letter grades are preferred. Pass/Fail is acceptable if the coursework was completed at a regionally accredited institution.
- Students must have completed, or be enrolled in, all prerequisite courses by January of the planned matriculation year. Special permission may be granted on a case-by-case basis by the Office of Admissions to complete the courses in a spring or summer semester, ending no later than July of the planned matriculation year.

Letters of Recommendation

Interfolio, and the U.S. Postal Service. Letter writers can opt to upload letters directly to AMCAS through the AMCAS Letter Writer Application. Instructions can be found at: services.aamc.org/letterwriter. Please see the following AMCAS URL for details on the Letters of Recommendation (LORs) and the letter request forms: students-residents.aamc.org/how-apply-medical-school-amcas/section-6-amcas-application-letters-evaluation.

- Applicants must submit a minimum of 3 letters to be considered for an interview. We recommend a maximum of 5 letters.
- All letters of recommendation must be current and contain either a handwritten signature or appear on official letterhead.
- The three mandatory letters of recommendation should include a letter authored by a Pre-Health committee or a Pre-Health advisor, if available. Applicants who do not have a Pre-Health committee or Pre-Health advisor should submit letters from someone knowledgeable about the applicant's academic capabilities.
- If the applicant has been out of school for several years, he/she may choose to submit a reference letter from an employer.
- It is also strongly recommended, and preferred, that at least one of the personal recommendations come from a physician the applicant has observed and/or worked with in a clinical environment.
- Letters from relatives are not permitted.

Transcripts & Supplemental Records

The deadline for Early Decision applicants is August 1 and November 15 for Regular Decision applicants.

- Transcripts must arrive to AMCAS directly from the college's/university's Registrar's office.
- All student supplemental records (items required in addition to the primary AMCAS application) must be submitted within one week of receipt for the Early Decision program and two weeks of receipt for the Regular Decision Program.
- All required documentation must be submitted to the MCG Office of Admissions by August 1 for Early Decision applicants and December 1 for Regular Decision applicants.

MCAT Exam

- Applicants must take the MCAT, preferably in the spring before applying to the Medical College of Georgia.
- All applicants must have taken the MCAT no earlier than January 2023.
- The last MCAT test date for Early Decision Program applicants in the 2025-2026 application cycle is June 28, 2025.
- The last test date for Regular Decision Program applicants in the 2025-2026 application cycle is September 13, 2025.
- Psychology and/or Social Science courses are recommended for students preparing to take the MCAT.
- MCAT registration packets can be requested by visiting: aamc.org.

Interviews

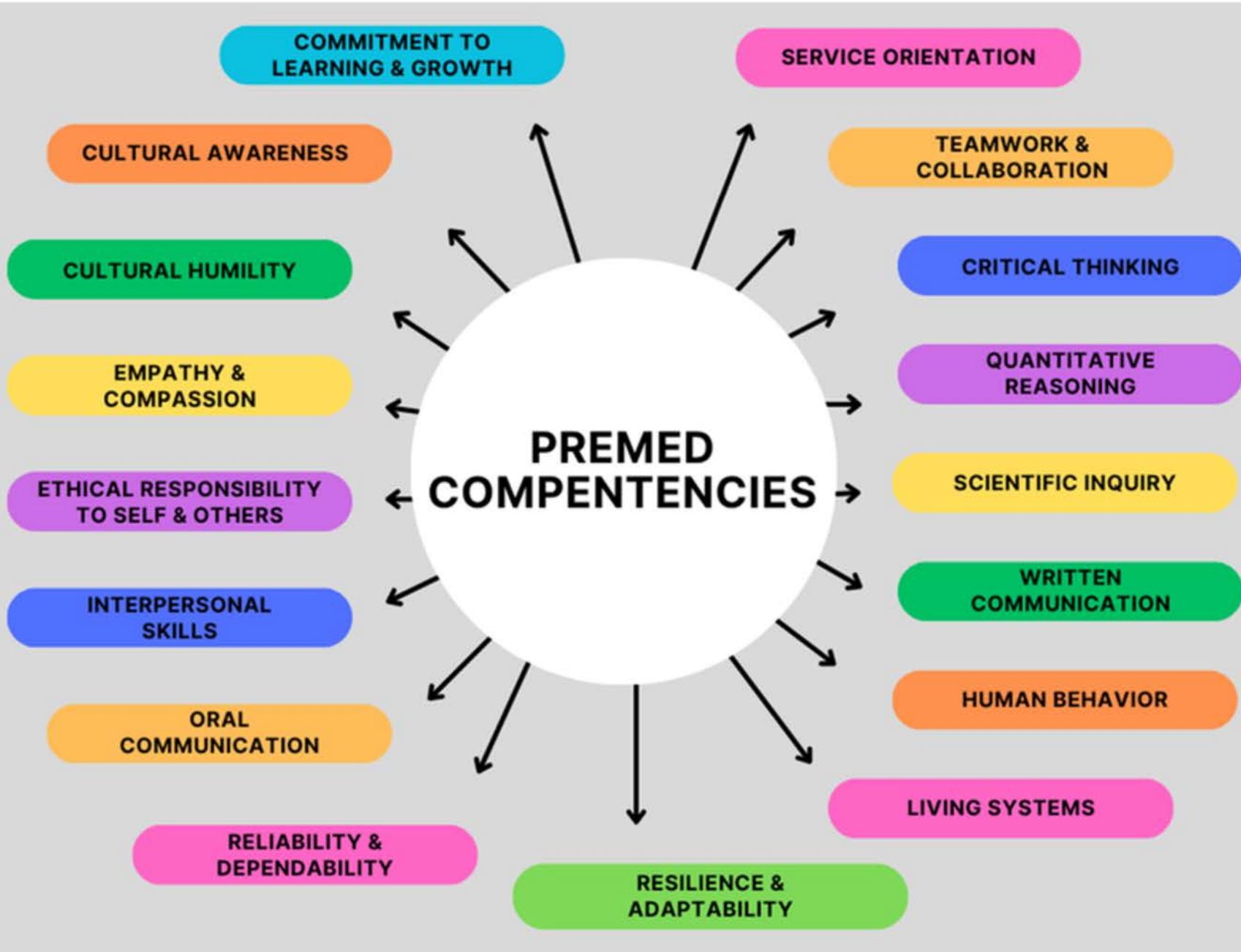
Students invited to interview can expect to participate in a Multiple Mini-Interview process, which allows for a consistent evaluation of all candidates.

- The MMI is a series of eight interviews, eight minutes in length, designed to measure an applicant's verbal and non-verbal skills, maturity, critical thinking capabilities, and readiness to enter medicine.
- Interviews are by invitation only.
- Given the highly competitive nature of the applicant pool, applicants with GPAs less than 3.0 or an MCAT score of less than 496, are not considered competitive for interview.

For additional information on what it is like to participate in MMIs, please visit the AAMC's reference page at: students-residents.aamc.org/applying-medical-school/article/what-its-participate-multiple-mini-interviews-mmis.

Admission Guidelines & Policies

The Admissions Committee conducts a mission-aligned review of qualified applicants and strives to accept applicants who will help meet the health care needs of a Georgia's widely dispersed and patient population. Applicants should have academic ability, personal attributes and interests consistent with the Medical College of Georgia's mission of improving health and reducing the burden of illness on society. Information used to assess academic accomplishments, experiences, personal attributes and interests includes but is not limited to the applicant's:



Medical schools use the above competencies to evaluate applicants' readiness for medical school. For more information about the AMCAS PreMed Competencies, please visit: <https://students-residents.aamc.org/real-stories-demonstrating-premed-competencies/premed-competencies-entering-medical-students>.

Technical Standards

Physicians and medical students must possess physical, cognitive, emotional, interpersonal, and communication skills to successfully complete their medical education and practice proficiently in medicine. These abilities and characteristics are defined as technical standards. In conjunction with academic standards established by the faculty of the Medical College of Georgia, these standards are required for admission, matriculation, continuation, and graduation. Delineation of technical standards is required for the accreditation of U.S. medical schools by the Liaison Committee on Medical Education. Candidates for the M.D. degree must possess aptitude, abilities, and skills in observation; communication; motor function and coordination; intellectual abilities involving conceptualization, integration, and quantitation; and behavioral and social skills, abilities, and aptitude. Students must personally demonstrate these technical standards in order to fulfill the essential course requirements of general medical education as well as eventual practice. These technical standards are prerequisites for entrance, continuation, promotion, retention, and graduation from medical school. Reasonable accommodation is available to assist with a variety of disabilities and may be permitted for disabilities in certain areas. Under all circumstances, a candidate should be able to perform in a reasonably independent manner. Therefore, third parties cannot be used to assist students in accomplishing curricular requirements in these five areas:

- Observation • Communication
- Motor Function and Coordination
- Intellectual Abilities including Conceptualization, Integration and Quantitation
- Behavioral and Social Attributes

Graduates of the Medical College of Georgia at Augusta University must function in a broad variety of clinical situations and render a wide spectrum of patient care. These standards are guidelines and are subject to revision.

Campus Assignment

Out of the 304 seats in the entering class of 2026, 254 students will be assigned to the MCG campus in Augusta, and 50 students will be assigned to the Southeast campus in Savannah. Campus assignment is based upon an accepted applicant's designated campus preference and space availability. Accepted applicants will be provided with a campus preference form as part of the acceptance packet. Alternate list students will receive a campus preference form as part of the alternate list notification. All students are notified of their campus assignment prior to matriculation, with the majority of campus assignments being made in mid-April. While student preference is strongly considered, there is no guarantee any applicant will be assigned to his/her/their preferred campus. Campus preference does not affect admission decisions and alternate list students must be willing to accept a position on any campus.

MCG's Acceptance & Withdrawal Procedures

It is expected that all accepted applicants be aware of, and participate in, the AMCAS "Choose Your Medical School" tool to communicate enrollment intentions. Doing so helps prevent unfilled positions in the entering class. Each institution has its own deadlines and requirements for when applicants must commit to enroll through AMCAS. Failure to adhere to these deadlines may result in an administrative withdrawal of an applicant's acceptance:

February 19, 2026

Accepted applicants may select the "Plan to Enroll" option in AMCAS via the "Choose Your Medical School" tool.

April 15, 2026

Accepted applicants with multiple admission offers should narrow their choices to three medical schools, with no limit on the number of alternate list offers they may hold.

April 30, 2026

Accepted applicants may select the "Commit to Enroll" option in AMCAS via the "Choose Your Medical School" tool. This signals that an applicant is committing to MCG and withdrawing applications from other medical schools. Selecting "Commit to Enroll" does not automatically withdraw acceptances from other medical schools.

May 1, 2026

If MCG receives notification from AMCAS that an applicant has committed to enroll at another institution, we will withdraw that applicant from the 2026 entering class.

June 1, 2025

Before June 1, students accepted from the alternate list will have five business days to affirm their acceptance to MCG and withdraw their acceptance from other medical schools. Students accepted after June 1, must affirm their acceptance and withdraw from other medical schools within 48 hours.

June 29, 2026

All accepted students are required to "Commit to Enroll" by June 29. Those participating in the pre-matriculation program must commit by May 15. If not, MCG may withdraw you from the 2026 entering class.

Criminal Background Check

The Association of American Medical Colleges recommends that all US medical schools obtain a national background check on applicants upon their initial conditional acceptance to medical school to bolster the public's continuing trust in the medical profession, enhance the safety and wellbeing of patients, ascertain the ability of accepted applicants and enrolled medical students to eventually become licensed as physicians, and to minimize the liability of medical schools and their affiliated clinical facilities.

Student Health Insurance

AU students must carry comprehensive health protection meeting the minimum benefit standards listed below.

Plan must be ACA compliant, meaning that the plan is an individual or group insurance plan meeting the requirements of ACA:

1. Unlimited Maximum Benefit for covered medical expenses.
2. Coverage for essential benefits (with no dollar limits), as defined under the ACA. This includes, but is not limited to:
 - a. Pharmacy
 - b. Mental health services on parity with medical services
 - c. Maternity benefits
 - d. Preventive care with no cost-sharing for Preferred Providers
 - e. Coverage for pre-existing condition with no waiting period
 - f. Pediatric dental and vision coverage
3. Maximum preferred provider total out-of-pocket expenses cannot exceed \$8,150 per member (\$16,300 per family).
4. For students in J status waiver eligible coverage meeting USG and U.S. Department State regulatory minimum requirements must be submitted at the time of the immigration check-in appointment. J visa holders must have the following minimum benefits:
 - a. Deductible of no more than \$500 per accident or illness.
 - b. Medical Benefits of at least \$100,000 per accident or illness.
 - c. Expenses associated with the medical evacuation to his or home country in the amount of \$50,000
 - d. Repatriation of remains in the amount of \$25,000. (Can be purchased separately)
 - e. A policy underwritten by an insurance carrier with:
 - a. an A.M. Best rating of "A-" or above
 - b. a McGraw Hill Financial/Standard & Poor's Claims Paying Ability rating of "A-" or above
 - c. Fitch Rating, Inc. rating of "A-" or above
 - d. a Weiss Research, Inc. rating of "B +" or above Bridge, Gap, Monthly, TriTerm, STM (Short Term Medical), limit/Indemnity plans will not be accepted.

Immunization Policy

The minimum immunization requirements for all University System of Georgia colleges and universities are established by the Georgia Board of Regents. Specific institutions, with the concurrence of their Presidents and the Chancellor, may require some immunizations not required for all new students by this policy. Institutions are also authorized to impose additional immunization requirements for students when, in the opinion of the President of the institution and with the concurrence of the Chancellor and appropriate public health authorities, there is a substantial risk of exposure to other communicable diseases preventable by vaccination (BOR Minutes, 1990-91, p.114). All entering Augusta University students are required to provide AU with documentation of the minimum immunization requirements set forth by the Board of Regents. Those students enrolled in a college on the Health Sciences Campus are required to provide additional documentation/ proof of immunity to AU per the requirements of the college of enrollment. All students living in any AU Residence Hall (University Village or health sciences housing units) must provide proof of immunization for the meningococcal virus that causes meningitis. Immunization Exceptions: In cases in which compliance with this policy prior to the start of classes is not feasible for the enrolled student, Student Health may grant an extension for the student to comply. The following list includes the only exceptions to compliance with this policy. Any exceptions must be granted jointly by the student's college of enrollment and the Registrar's Office. 1. If the student has a medical condition that prohibits compliance with this policy.

1. If the student has a medical condition that prohibits compliance with this policy.
2. If the student is in the process of completing a specific vaccination series, the student is expected to follow the required time frames of completion associated with each requirement within the series.
3. A religious waiver can be granted with a statement of affirmation that the immunizations required by the BOR/ AU are in conflict with students' religious beliefs. Students on the Health Sciences Campus will not be granted a religious waiver if the curriculum involves physical presence at a clinical site.
4. A student who is enrolled in a distance learning program based on the requirements of the college of enrollment.

HIV, HBV, HCV Policy

This policy only applies to Augusta University Health Sciences students during their enrollment in Health Science Programs (e.g. Allied Health, Dentistry, Biomedical Graduate Studies, Medicine or Nursing). It provides a method to manage students who are, or become infected with a bloodborne pathogen including Human Immunodeficiency Virus (HIV), hepatitis B (HBV), and hepatitis C (HCV). It describes evidence-based procedures for managing infected students in a way that protects their privacy while providing reasonable precautions to create a safe environment in the academic health care setting. Any Medical College of Georgia student who knows or has reason to believe that he/she has a blood-pathogen is required to report this information immediately to the Office of Student Health. Failure on the part of a student to report a known blood-borne pathogen may result in disciplinary action, up to and including dismissal. Student Health Services augusta.edu/shs Immunizations augusta.edu/shs/immunizations.

Deferment

Accepted students seeking deferment will be considered on a case-by-case basis. One-year deferments are only available to candidates on the alternate list after an offer of admission has been made and only in cases of extreme personal hardship. A deferment requires extenuating, unexpected personal circumstances. To be considered, the student must write a letter to the Associate Dean for Admissions explaining the reasons for deferment. Each case will be presented to and voted on by the Admissions Committee. Only one request for a one-year deferment will be considered. Deferment requests should not be made to delay a decision on which medical school to attend. The Medical College of Georgia cannot hold scholarship offers made in the initial year of acceptance for the following year. A deferred student is eligible for scholarship offers in the following year with no guarantee. A deferred student's campus assignment will not be guaranteed for the following year.

Transfer

The Medical College of Georgia at Augusta University recognizes extenuating circumstances and will consider requests for transfer from students enrolled and in good standing at an LCME- accredited medical school on a case-by-case basis in situations of personal hardship or other compelling circumstances. The Medical College of Georgia will consider requests for transfer into phase two of the pre-clerkship curriculum or transfer into the beginning of the clinical curriculum on a case-by-case basis, contingent on class space availability. Acceptance decisions will be made at the discretion of the MCG admissions subcommittee with input as appropriate from the Curriculum Office, the Office of Student Affairs, and the Vice Dean for Academic Affairs. Transfer students are considered with the same rigor by the subcommittee as those applying for entry into the first year. All decisions by the admissions subcommittee are final and cannot be appealed. Acceptance will be contingent upon stipulations outlined by the subcommittee. Given MCG's accelerated pre-clerkship curriculum, transfer acceptance is primarily considered for students entering the beginning of the clinical years. Transfer into phase two of the pre-clerkship curriculum is considered on a case-by-case basis and academic comparability of completed curriculum components must be reviewed and approved by MCG's Office of Academic Affairs. Any student accepted for transfer must be willing to be placed on a regional clinical campus and campus preference cannot be guaranteed.

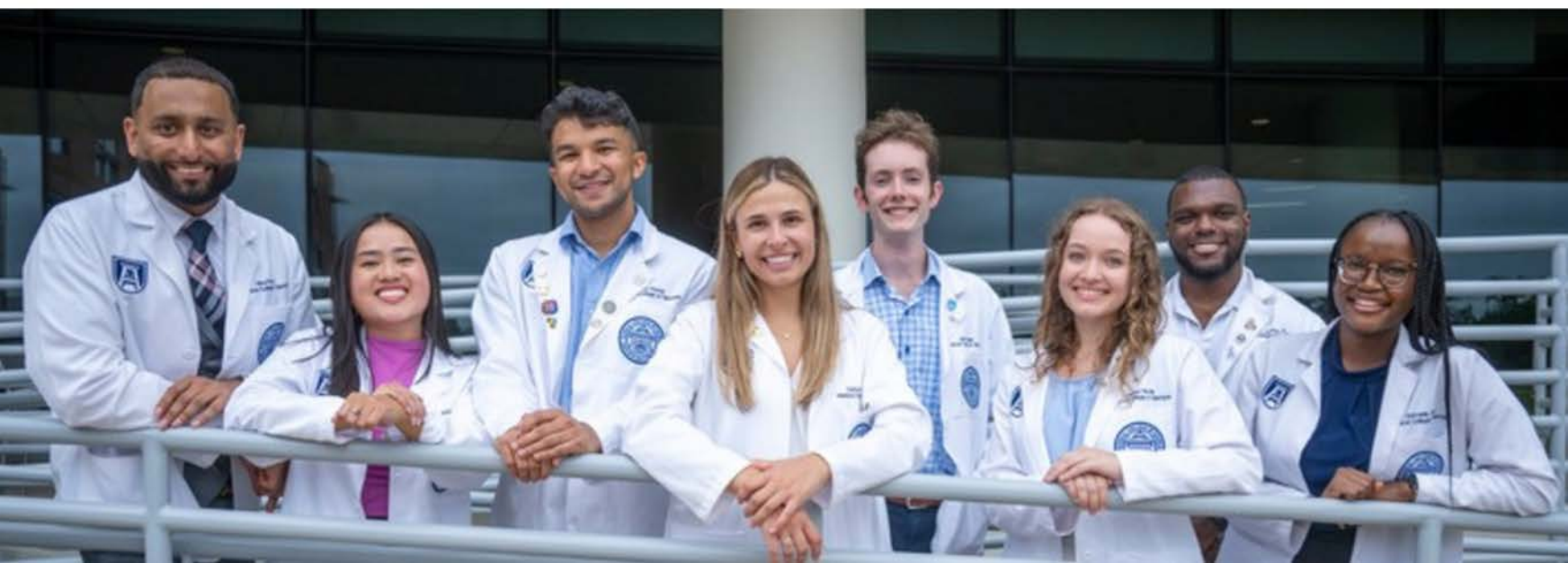
Readmission Policy

The Medical College of Georgia at Augusta University will consider requests for readmission into medical school for students who voluntarily withdrew from MCG in good academic standing less than two calendar years from the time of withdrawal. Students who were dismissed from the medical school program or had professionalism concerns outlined by the MCG Promotions Committee are not eligible for readmission. Readmission decisions will be made at the discretion of the MCG Ad Hoc Readmission Committee. All decisions of the Ad Hoc Readmission committee will be final and cannot be appealed. Readmission will be contingent upon stipulations outlined by the Ad Hoc committee.

International Applicants

In order to be offered an interview, you must be either a U.S. citizen or a permanent resident of the U.S. with a valid Permanent Resident Card. International applicants, as well as U.S. citizens, must have completed at least the last two years of undergraduate or graduate education in a regionally accredited* U.S. or Canadian institution. All non-U.S. coursework must be evaluated by Josef A. Silny & Associates or World Education Services(WES), companies that offer foreign credential evaluation and translation. You should have a university and post-secondary course-by-course evaluation completed and sent directly from the Silny or WES office to the MCG Office of Admissions for review. For more information, including cost and evaluation timeline, please visit silny.org or wes.org.

**Accredited by the appropriate regional agency for colleges and schools, i.e., the equivalent of the Southern Association of Colleges and Schools.*



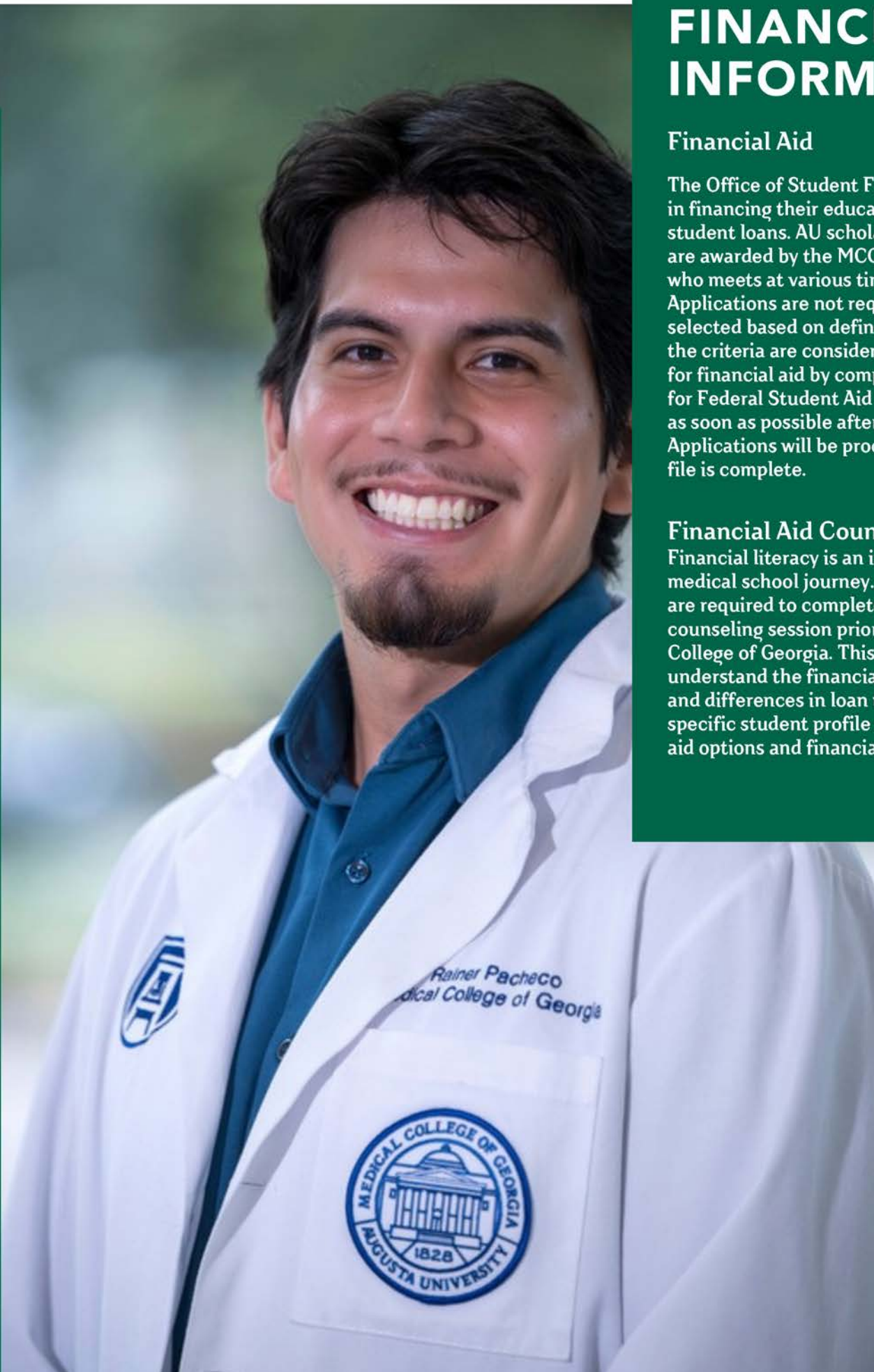
FINANCIAL INFORMATION

Financial Aid

The Office of Student Financial Aid assists students in financing their education primarily through student loans. AU scholarships for medical students are awarded by the MCG Scholarship Committee, who meets at various times throughout the year. Applications are not required as students are selected based on defined criteria, and all who meet the criteria are considered. Students should apply for financial aid by completing a Free Application for Federal Student Aid application at fafsa.ed.gov as soon as possible after October 1 of each year. Applications will be processed when the student's file is complete.

Financial Aid Counseling Requirement

Financial literacy is an important component of your medical school journey. All incoming medical students are required to complete an individual financial aid counseling session prior to matriculation at the Medical College of Georgia. This is an opportunity to better understand the financial aid process, including costs, and differences in loan types, and to review your specific student profile to ensure knowledge of financial aid options and financial literacy.



2025-2026 TUITION AND FEES*

TUITION PER SEMESTER

Doctor of Medicine

Description	Rate
In-State, 12 or more hours	\$14,825.00
In-State, 1-11 hours	\$1,236.00 per hour
Out-of-State, 12 or more hours	\$30,978.00
Out-of-State, 1-11 hours	\$2,583.00 per hour
Out-of-Country, 12 or more hours	\$31,879.00
Out-of-Country, 1-11 hours	\$2,657.00 per hour

FALL & SPRING MANDATORY FEES, PER SEMESTER

Mandatory fees are charged to each student per semester.

Description	Rate
Activity Fee	\$85.50
Athletic Fee	\$280.50
Health Fee	\$210.00
Student Center/Facility Fee	\$73.50
Technology Fee	\$165.00
Transportation Fee	\$111.00
Wellness Fee	\$87.00
Total	\$1,012.50

SPECIAL FEES

Special fees may be assessed for elective items, such as parking, or for program or course specific fees, such as those related to labs.

Description	Rate
Anatomy Lab Fee	\$400.00
Immunization Tracking Fee	\$25.00
Medicine Disability Insurance	\$93.00
Medicine Liability Insurance	\$37.00
Needlestick and Exposure Insurance	\$41.00
Student Health Insurance (Fall)	TBD
Student Health Insurance (Spring/Summer)	TBD
Student Health Insurance (Summer only)	TBD
Student Health Insurance Athlete Rider (Fall)	TBD
Student Health Insurance Athlete Rider (Spring/Summer)	TBD
Student Health Insurance Athlete Rider (Summer Only)	TBD



*As of July 2025 and are subject to change

THE MEDICAL COLLEGE OF GEORGIA OFFICE OF ADMISSIONS

Lee Auditoria Center, BC-1100
Augusta, GA 30912

Phone: 706-721-3186

Fax: 706-721-0959

Email: mcgadmissions@augusta.edu

Website: augusta.edu/mcg/admissions

The Office of Admissions Team

Kelli Braun, MD, Senior Associate Dean for Admissions

Scott Barman, PhD, Assistant Dean for Admissions

Macy Rice, MPA, Director of Admissions and Recruitment Operations

Lacey White, BS, Associate Director of Admissions

Christina Shorter, BA, Admissions Counselor

Patricia Lee, MBA, MPM, Admissions Counselor

Genna Salvador, MA, Admissions Counselor

Augusta University is an Affirmative Action/ Equal Opportunity Educational Institution. No person shall, on the grounds of age, disability, gender, national origin, race, religion, sexual orientation or status as a Vietnam Era Veteran, be excluded from participation in, or be otherwise subjected to discrimination in any educational program, activity or facility.



AUGUSTA UNIVERSITY

**MEDICAL COLLEGE
OF GEORGIA**

Contact Us

Office of Admissions

Medical College of Georgia at Augusta University

Augusta, Georgia 30912-4760

Phone: 706-721-3186

Fax: 706-721-0959

augusta.edu/mcg/admissions

facebook.com/mcg.aug

twitter.com/mcg_aug

instagram.com/mcg_admissions